

A person in a blue uniform is standing in a server room, looking at a control panel on a server rack. The room is dimly lit with blue and orange lights. The person is wearing a blue long-sleeved shirt and dark pants. The server racks are made of metal mesh. The control panel has a small green screen and several buttons.

Protecting people, property and data

in a million locations worldwide

Integrated Security Solutions

Schneider
Electric

Maintaining security
demands constant
vigilance

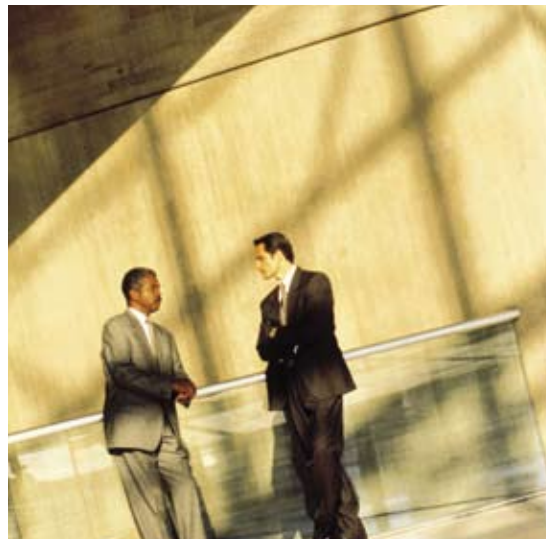


Tap our industry expertise and finally get a good night's sleep

Securing people, property and data is mission critical to the success of your business, regardless of the industry you're in. By nature, most of this work happens behind the scenes. Until something goes wrong.

How can you improve your security picture and optimize existing investments? Do what Georgia Institute of Technology in Atlanta, Georgia did. Create one of the most intelligent, responsive security systems in the world by investing in integrated security solutions. You'll reduce capital expenses and operating costs at the same time.

Protect your assets with Schneider Electric. We're the company that secures Rockefeller Center® in New York City and countless other landmark properties around the world. Let us help you develop the most advanced and flexible security solution possible — based on industry best practices — that is agile enough to respond to the security needs of today and tomorrow.



// The Schneider Electric system allows me to tie in multiple building functions and reduce my costs. In the past, I worked with multiple systems, all with different front ends. Now, integrating all our systems together and using only one front-end is not only more convenient, it allows me to have a small facilities staff. //

— Bill Lacava, Vice
President of Enterprise
Networks, Genpass, Inc.



Create the most secure business environment possible

We'll show you how

Today's security picture is changing rapidly. Risks are increasing. New threats are emerging. Protecting your assets – customers, employees, property and data – is still at the core of your security strategy. But you're now expected to reduce risk, mitigate liability, protect revenue streams, and reduce operating costs and insurance premiums.

You're also expected to align or comply with evolving international, federal and local security regulations and standards like PCI, HIPAA, GLBA, HSPD-12, FIPS 201, FIPS 140-2, EN50131, -133 and -136, Sarbanes-Oxley Act, Basel II, and ISO17799 to name a few. Is your security plan on the right track?

In this age of heightened security concerns, you need a partner who understands your daily challenges. That partner is Schneider Electric. We have the industry expertise to provide security solutions that comply with emerging standards.

We have the technical expertise to leverage your existing security investments. And we create customized solutions that reduce risk and boost your bottom line.

Count on us for a comprehensive physical and logical security solution that includes risk analysis and design, full system integration, and industry leading technologies for access control, intrusion detection, fire & life safety, and video surveillance & analytics. For over 70 years, we've set the industry standard for performance and innovation in security applications.

Control, monitor and secure your facilities like never before

And save on installation, training, maintenance and manned guarding costs

Traditional security systems comprise a set of separate processes, procedures and equipment aimed at guarding employees, visitors and facilities. This approach is no longer viable. It's too cumbersome and costly. Each system requires its own hardware, software, installation, oversight, service, maintenance, administration and training. Today's security challenges require solutions that are all inclusive, seamless and unobtrusive.

That's why more and more businesses are deploying an integrated security strategy. And they're reaping the benefits in a big way: less cabling, less hardware, devices that perform multiple functions, and reduced installation costs mean lower CAPEX. And reduced training, maintenance, and personnel costs mean lower OPEX. Throw in simplified usage and faster response times and you're looking at greatly improved overall security of physical and logical assets.

Now, picture this: integrated security systems provide single-seat control of your entire security landscape, whether you are responsible for one or multiple facilities. Situational analysis can happen from a single user interface, giving you deeper understanding and far more control over your security domain.

What's more, integration lets you do more with less. For example, you'll need fewer guards to monitor and assess vast amounts of video data, because intelligent video does the heavy lifting: surveillance data is automatically analyzed and tagged, sending alarms to operators only when suspicious activities occur. With real-time, actionable information, incidents can be identified immediately and responded to more quickly, for a more secure environment.

Now you can monitor, control and secure your facilities like never before, with Schneider Electric's integrated access control, intrusion detection, fire & life safety, and video surveillance & analytics.



Kuala Lumpur International Airport in Malaysia chose Schneider Electric security solutions to safeguard its 25 million annual passengers — and its world-class reputation. With an eye on providing state-of-the-art airside and landside security while still maintaining a serene environment, this award-winning airport integrates video surveillance, access control, boarding gate control, personnel management, photo badging and building management. By using Schneider Electric's future-proof solutions, KLIA protects something else: their investments in technology.



We deliver flexibility, scalability and peace of mind with our security over IP solutions

There's no question that IP convergence is a revolutionizing trend in business. Enterprise networks provide a useful, cost-effective backbone to facilitate timely, business-critical communication. The convergence of voice, fax, data, image and video information into a single IP network is transforming how companies interact with customers, employees and suppliers.

As security systems converge with IP networks, Schneider Electric offers single platform solutions where video security, access control, intrusion detection, photo badging, paging, alarms, fire & smoke control, and emergency communication are components that work together within a greater system. This level of convergence creates scalable and easy-to-use solutions that deliver what you want most — flexibility, reliability and peace of mind.

And because our solutions support both analog and IP equipment, we protect your investments in existing systems while providing a future-proof path for IP migration.

With our clear understanding of IT challenges and opportunities, we continue to broaden the market's understanding of what IP-based security can mean to your unique application.

Security that talks to IT, HR, Finance and your building management system

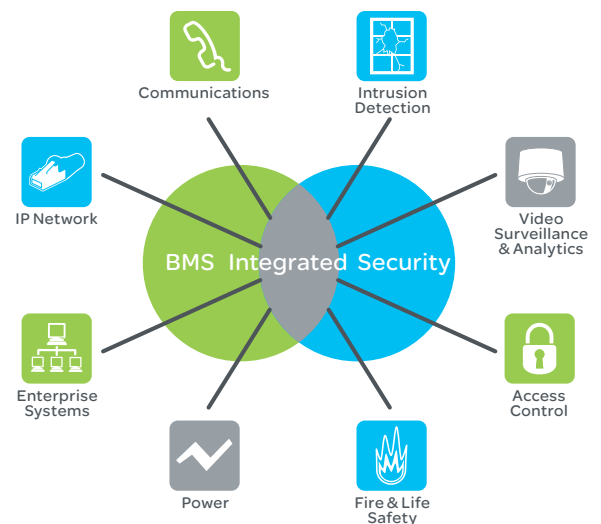
Now that's intelligent

Integrating all your security applications creates a more secure, responsive environment. But what if you could take your systems to the next level? What if you could tap the wealth of business value just waiting to be realized? You can: integrate security systems with your building management, IT and enterprise systems.

With our solutions, your systems will speak the same language. From a single software platform, systems work together, collecting and sharing vast amounts of facility and financial data. This creates a reservoir of business intelligence that you can use to make real-time decisions that improve business performance. Forecast, control and manage your facilities like never before while creating a more productive, energy-efficient workplace.

And our commitment to open architecture means that we can provide you with a fully customizable solution. Because we support every major communication standard in security management and building automation, our solutions can fully integrate on one network — across enterprises. So you're free to choose best-in-class solutions for each need, and your systems will still work together. And you'll never be locked into one vendor or technology.

At Schneider Electric, we believe that less is more. A single system where security, power, lighting, electrical distribution and HVAC integrate with IT, Finance, and HR, is not only easier to manage: it delivers significant savings — both during installation and throughout ongoing operations. That's where you find real, measurable business value.



Schneider Electric's integrated security solution for The University of Aarhus, in Århus, Denmark, is the largest of its kind in the country to date, covering a total area of 334,000 m² and offering the capacity to handle 75,000 users. The University wanted to reduce theft and vandalism, keep unwanted visitors off campus, and integrate building, security and energy management into one, future-proof system. The solution includes an intelligent ID card that provides permissions-based access to campus buildings and environs; it can also be used as a debit card to make purchases anywhere on campus.

Get a single-seat view of your entire security domain

for a more secure, responsive environment

Digital Video Management

Schneider Electric offers a full suite of solutions for video management and analysis. View live or recorded video on-demand for any alarm or event. Quickly pinpoint potential security breaches with our video content analysis software; it provides real-time alarm and forensic tools for tracking events, eliminating the need for constant monitoring. Our integrated video solutions offer powerful benefits such as:

- Automatic display of camera views per alarm or access event
- View video at up to 30 frames per second and bandwidth-grade resolution
- Powerful video analytics processing on the system or at the edge
- Easy storage, search and control of digital recordings on hard disk
- Integrated pan/tilt/zoom controls to view every area effectively
- Support for analog and IP hardware, protecting your investments in existing systems while providing a future-proof path for digital/IP migration

Fire & Life Safety

We offer comprehensive fire detection and alarm systems that integrate easily with our other security offerings. Our intelligent, innovative products are user-friendly, scalable and highly reliable.

- Addressable & conventional control panels and detectors
- Smoke, heat, linear heat and flame detectors
- Emergency lighting systems
- Alarming equipment & other peripherals

IP Network

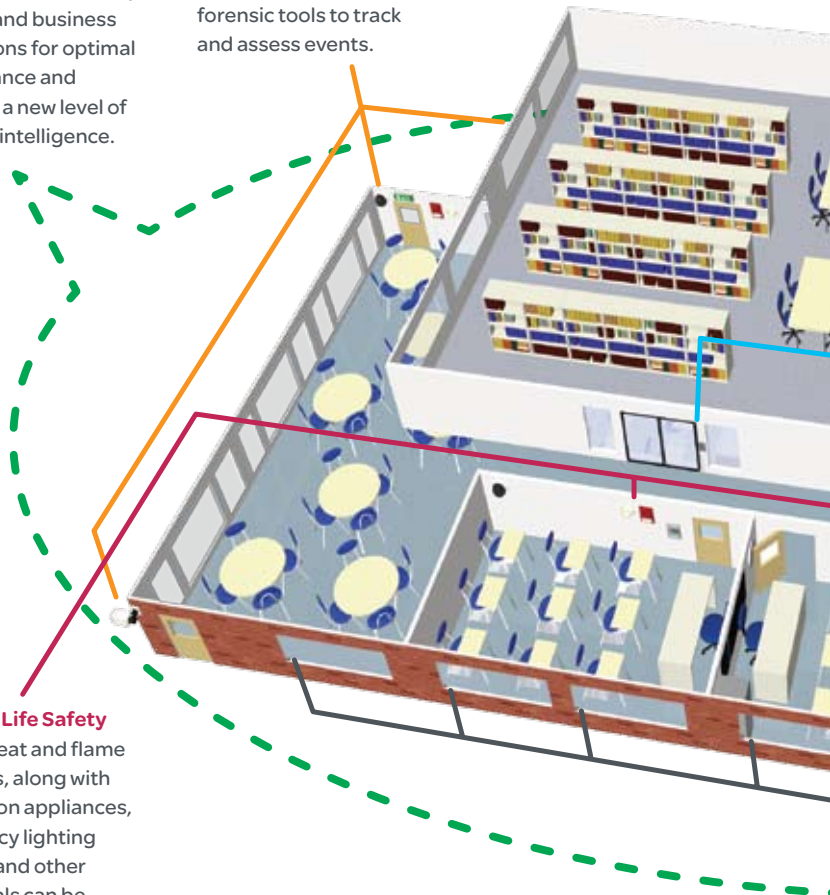
IP networks based on open protocols provide a useful, cost-effective backbone that facilitates timely, business critical communication. A single network allows for the convergence of security, building and business applications for optimal performance and access to a new level of business intelligence.

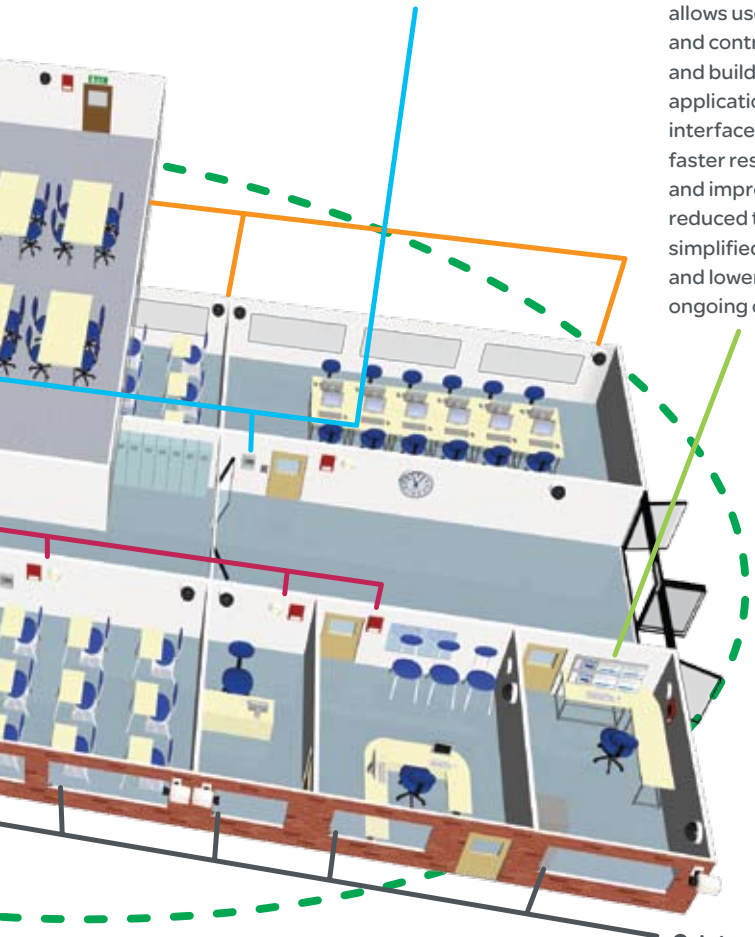
Video Surveillance & Analytics

Fully integrated video security automatically displays video per alarm or event at command central. Quickly pinpoint potential security breaches and significant events with our analytics software that provides real-time alarm and forensic tools to track and assess events.

Fire & Life Safety

Smoke, heat and flame detectors, along with notification appliances, emergency lighting systems and other peripherals can be integrated into our security management system. In case of fire, emergency exits are automatically unlocked and illuminated, and ventilation is set to safety mode.





● **Access Control**

Card readers allow permissions-based access to specific security zones. Zones can be activated and deactivated independently of each other. As occupants enter areas, lighting is activated and temperature is set to comfort levels.

● **Single-Seat Control**

Our user-friendly management system, accessed on-site or remotely via the web, allows users to monitor and control all security and building management applications via a single interface. This means faster response times and improved security, reduced training, simplified maintenance, and lower installation and ongoing operating costs.

● **Intrusion Detection**

When zones are activated, motion sensors and window contacts detect intrusion and send alarms to command central. These same detectors can be used to regulate lighting, heating, cooling, and ventilation systems based on room occupancy in order to conserve energy.

Access Control

Our feature-rich access control systems are designed from the ground up to meet the most stringent security requirements and government regulations. They provide encryption and authentication to enable tamper-proof communications between controllers and workstations. Benefits include:

- Easy control of access points – doors, gates, parking garages, elevators, production areas, data centers
- Flexible access scheduling
- Customized forms and templates for editing and managing personnel access rights
- Effective identification through photo badging or biometrics

Intrusion Detection

Schneider Electric security solutions integrate intrusion detection devices with your overall security network. Send intrusion alarms, create reports, and graphically view security incidents on a Schneider Electric workstation. Intrusion events can trigger automatic responses; for example, a glass-break alarm can cause a video feed to pop up on the workstation. Get a complete security overview for:

- Motion detection
- Cabinet tamper
- Glass break
- Duress
- Arm/disarm zones
- Digital dialer integration



We can provide specifications to end-users, architects, engineers and consultants to aid you in the system design process.



Setting the benchmark for innovation and performance

Pelco is security

Pelco is the recognized leader in video security systems and solutions, offering the most comprehensive array of products, services and expertise available in today's marketplace. With a long and prestigious history of offering high-quality products and fanatical customer service, Pelco is the most sought-after product supplier in the security industry.

As the leading video security solutions provider for more than two decades, Pelco has set the benchmark for innovative and reliable technologies — for any market, industry or application. Pelco produces the most respected offering of discreet camera domes and enclosures, video matrix systems, next generation digital video recorders, IP solutions, fiber optic transmission systems for video/data, and much more.

Pelco is driving the Security over IP revolution, as it continues to develop cutting-edge technologies and products. Among its latest award-winning innovations is Sarix™, the ground-breaking imaging technology that powers IP cameras with high-definition (HD) resolution, advanced lowlight capabilities, consistent color science, and super fast processing power. Ultimately, customer needs lie at the heart of Pelco innovation.

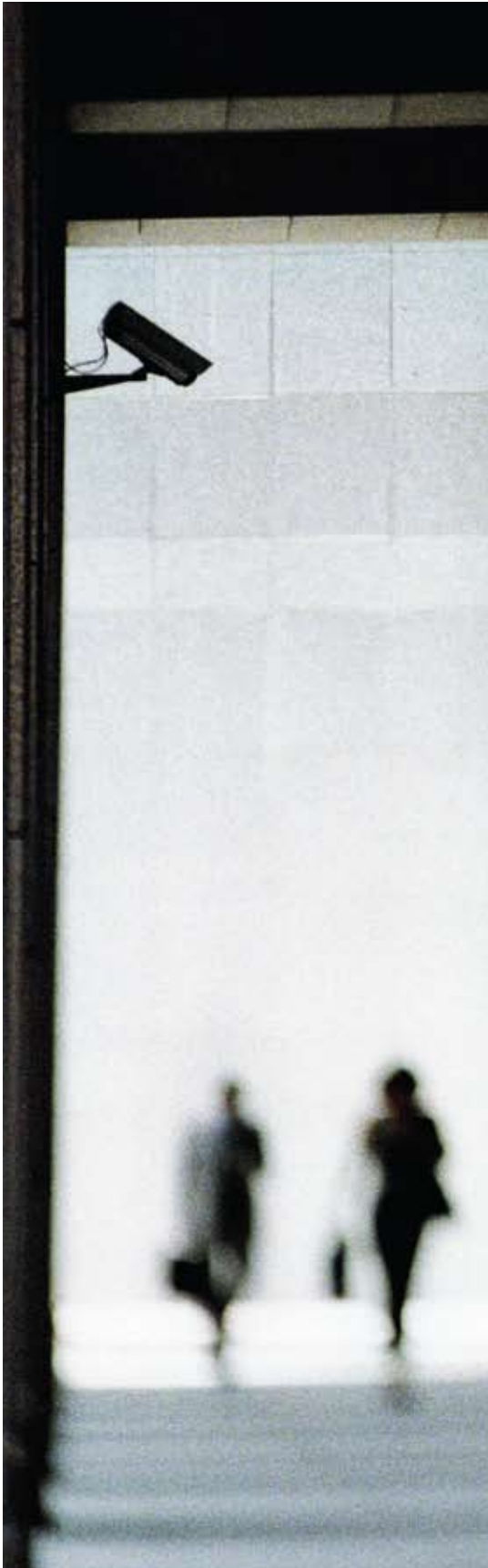
PELCO
by Schneider Electric



Humber Bridge in East Yorkshire, England, is an engineering marvel protected by a comprehensive Pelco security system that includes Esprit Positioning Systems. Featuring electronic image stabilization, Esprit easily overcomes vibration from wind and traffic. John Williams of Humber Bridge says the image quality is as good as he could possibly expect. "It's difficult to see how it could be improved."

Your trusted security partner

is Schneider Electric



Over the years we've handpicked companies like Control Systems International, Andover Controls and TAC to create the most distinguished integrated security offer in the market. Together with our video security company, Pelco, we are uniquely positioned to deliver the industry leading technologies and expertise that create the most secure business environments in the world.

As a global specialist in energy management with operations in more than 100 countries, Schneider Electric offers integrated solutions across multiple market segments, including leadership positions in energy and infrastructure, industrial processes, building automation, and data centers/networks, as well as a broad presence in residential applications. Focused on making energy safe, reliable, and efficient, the company's 114,000 employees achieved sales of more than 18.3 billion euros in 2008 (27 billion USD), through an active commitment to help individuals and organizations "make the most of their energy."

www.schneider-electric.com/buildings



Schneider Electric secures landmark properties worldwide Alton Mental Health Center, Alton, USA; Byblos Bank, Beirut, Lebanon; Calgary Courts Center, Calgary, Canada; Denver Art Museum, Denver, USA; Central Park, Dublin, Ireland; Edith Cowan University, Perth, Australia; Forstædernes Bank, Copenhagen, Denmark; Golden Gate Bridge, San Francisco, USA; Manchester United Football Stadium, Manchester, UK; Merck Worldwide Headquarters, Whitehouse Station, USA; Moffitt Cancer Center, Tampa, USA; Owen Roberts International Airport, Cayman Islands, UK; Statue of Liberty, New York City, USA; Strandskolan, Klagshamn, Sweden; Zlote Tarasy, Warsaw, Poland.

Schneider Electric

One High Street
North Andover, MA 01845 USA
Phone: +1 978 975 9600
Fax: +1 978 975 9698
www.schneider-electric.com/buildings

