

## Power distribution

**Application:** any building connected to a MV network

# Take advantage of discount MV utility rates without the risk of counterparty power cuts

“ To guarantee the lowest possible utility rates, I have agreed to go off the power grid during peak hours. Therefore, to avoid costly downtime, I need a back-up power supply that kicks in automatically after just a few seconds. ”

## Install an **Automatic Transfer System (ATS)** to switch the MV connection to a back-up generator

### Save energy

Depending on your rate agreement, the utility sends out a signal just before the higher peak rate kicks in or power is cut off.

The ATS receives this signal and:

- Starts the generator
- Turns on the main switch once the generator is ready
- Turns off the generator switch

Power is restored in **less than 10 seconds**.

### Increase power availability

ATS ensures power availability, performing the same functions if voltage loss is detected on the main electrical line, with power generally restored in **less than 15 seconds**.

- The fault passage indicator (FPI) ensures the ATS is locked if a fault current is detected to avoid cutting off power to a properly-functioning line.

Solution

Benefits

## For the user



### > Guarantee lowest possible utility rates

Savings of **10%** are achievable in many countries—in some countries, when demand is high and supply is short, the price per kWh can be multiplied by more than 10

### > Boost operating efficiency

with automatic monitoring and guaranteed power availability—ATS comes with an optional communication module to transmit information to a remote control system

## For professionals

### + Factory-tested, preconfigured design

- ATS comes ready to install on an RM6 switchboard in a T2001 box
- The T2001 automation comes pre-programmed, eliminating sequence errors during set-up

### + More efficient procurement: easy-to-order based on existing part numbers

- Plug-in connections only
- Kit included for mounting T2001 on wall or RM6

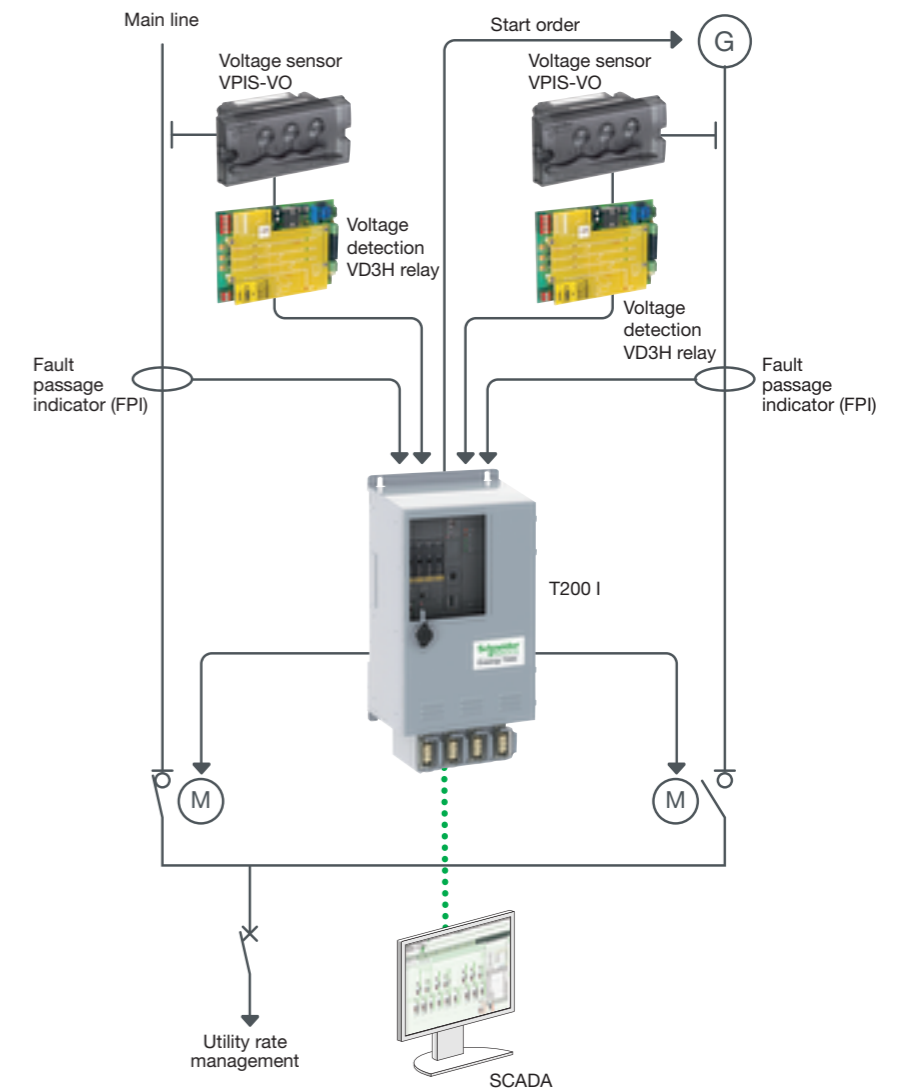
### + Simple commissioning: easy to configure service voltage, time delays, and ATS operating modes

### + Maintenance free: automatic testing and troubleshooting

## Examples

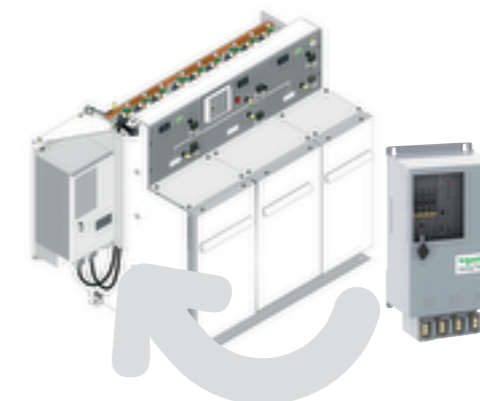
- > Users save **10% per year** off standard rates by opting for the national utility's special peak rate in France, for example

- Measure
- Reduce energy consumption
- Reduce energy costs



### RM6 ring main unit

- 24 kV
- includes sensors
- VPIS-VO VD3H relays and motorized switches



### T2001

- Embedded electronics
- Includes ATS
- Specifically designed for the MV network: unlike other solutions on the market, the 10kV insulation for AC supply protects the T200 against over voltages coming from substations