

ID-Spec Large design software

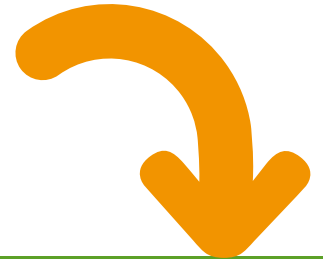


Take your electrical
system green!

Schneider
Electric



Are you frequently asked to meet increasingly tight customer deadlines without sacrificing safety or performance?




Spend up to **40% less time**

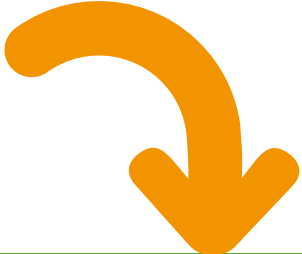
With **ID-Spec Large** design software, you can slash the time spent on electrical system design by up to 40%. The software can be used for all tertiary and industrial buildings from 250 kVA.

- > Automatically calculates system and equipment needs
- > Updates calculations each time a change is made during the design phase

- > Automatically produces technical specifications



Do your customers expect you to help them reduce capital expenditures and operating costs?



Save your customers up to 10% off their capital expenditures

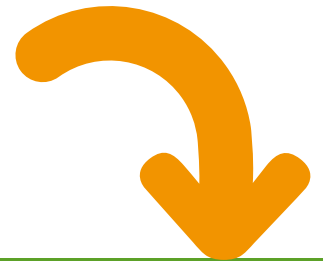
and reduce their operating costs by up to 3%

ID-Spec Large offers a unique array of functions that enable you to recommend solutions designed specifically to lower costs.

- > Reduce the amount of cabling required
- > Scale equipment to meet actual needs
- > Curb energy loss within the electrical system itself
- > Select more energy-efficient equipment like low-loss transformers and optimize equipment layout
- > Avoid utility penalties thanks to reactive energy compensation



Are your customers seeking high-performance, environmentally-friendly solutions?




100% of recommendations include ways to measurably improve environmental impact

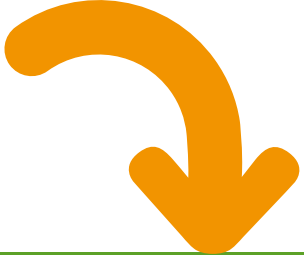
At each stage of the project, **ID-Spec Large** recommends the best possible option. It is the only software on the market capable of calculating a future system's energy performance.

- > Optimizes equipment choice and layout to reduce energy consumption
- > Calculates the exact number of kWh used by the electrical system

- > Calculates the amount of materials used, CO₂ emissions, and the proportion of recyclable materials



Do your customers want
to be sure they are getting
enhanced added value?



Go 100% professional!

ID-Spec Large six-in-one software has all of the tools you need to present a professional image and demonstrate the added value you are delivering to your customers.

- > Guarantees the quality of the electrical system design process
- > Leverages measurable energy performance data, bringing innovation into your design department
- > Makes unique recommendations including energy-efficiency specifications
- > Includes accurate figures for all recommended solutions
- > Enables you to quickly and easily compare and recommend different scenarios to your customers
- > 100% CAD



Where do I get ID-Spec Large design software?

- > The software is available on a CD or as a download.
- > To get it, simply contact your usual Schneider Electric representative.

Schneider Electric Industries SAS

35, rue Joseph Monier
F-92500 Rueil-Malmaison
FRANCE
Tél. : +33 (0) 1 41 29 70 00
www.schneider-electric.com

Standards and equipment are subject to change. The specifications and photographs in this document are subject to confirmation by Schneider Electric.

Published by: Schneider Electric

Design: pemaco

Printing:

Unique on the market

Enjoy a familiar user interface

ID-Spec Large is a totally innovative software package developed specifically to help you design electrical systems.

Beyond the software's outstanding technical capabilities, it offers a uniquely ergonomic user interface similar to other professional software you already use, like AutoCAD.



ID-Spec Large design software

Take your electrical
system green!

Schneider
Electric

ket

Take advantage of advanced functions

The ID-Spec Large interface boasts a dedicated tab for each of the three major pre-project phases: design, solution, and report.



Design

Calculate the power summary
(determine loads for lighting, motors, HVAC, and other applications)

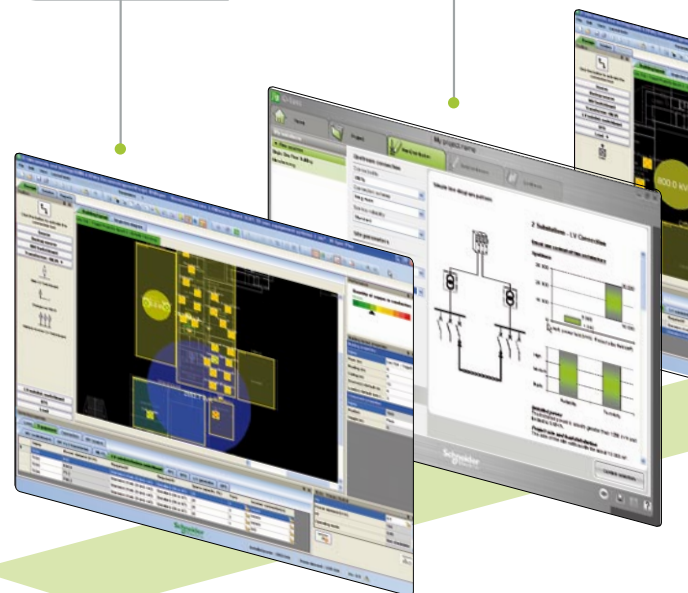


Exports loads directly to .dwg format architect's plans.

Configure the overall electrical system



Helps you select the electrical architecture based on the building's requirements.



Solution

Draft single-line diagrams

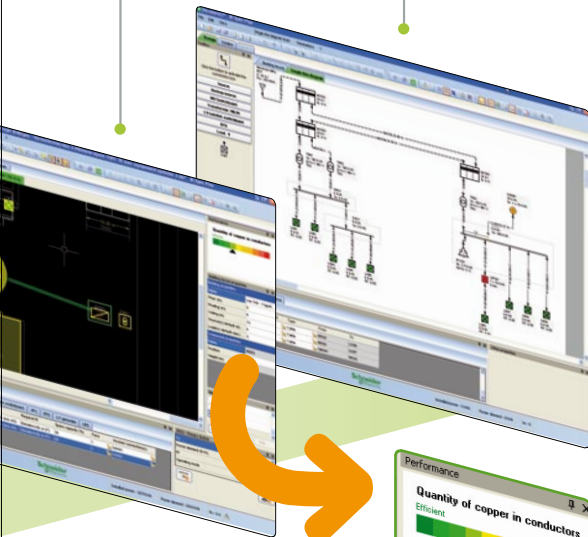


Helps you improve energy performance:

- > locates equipment closest to load centres
- > makes recommendations for responsive energy compensation.

ID-Spec Large automatically updates two design diagrams to ensure consistency:

- > the electrical diagram in the CAD interface
- > the single-line diagram.



A colour code provides you with real-time information on the solution's energy performance.



You are free to make changes to the system at any point during the design process. The entire design is updated automatically to reflect any changes you make.



Choose and size the equipment



Calculates equipment size and characteristics so you can modify the size of equipment rooms as needed.

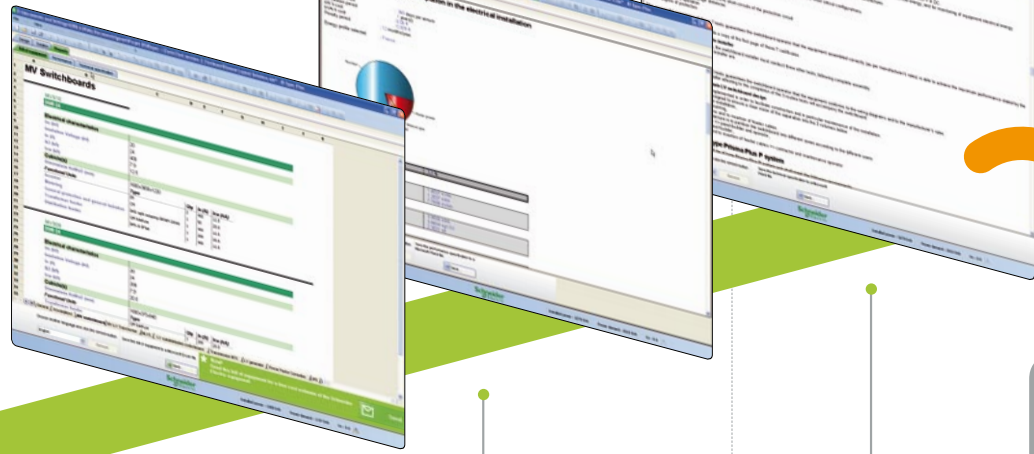
Assess electrical system performance



Includes functions not usually found in this type of professional software:

- > calculates loss and related CO₂ emissions
- > calculates amounts of copper and aluminium used
- > identifies parts of the system to optimize
- > calculates savings generated by energy-efficient solutions

Report



Generate list of recommended equipment




Simply send the list to your usual Schneider Electric representative for a price quote.

Produce energy performance report

Generate technical specifications for your Request for Proposal (RFP) submissions



ID-Spec Large automatically produces the technical specifications for Schneider Electric equipment to facilitate completion of your proposals.



Produce customizable reports in .doc, .xls, and .dwg formats

Benefits you can measure

For you

- > Spend up to 40% less time designing your electrical systems
- > Have the proof points you need to back up the key selling points of your proposals
- > Benefit from a new source of added value by offering energy-efficient solutions
- > Ensure that your RFP submissions are complete
- > Increase the reliability and safety of the systems you sell

Stand out from your competitors

For your customers

- > Reduce capital expenditures by up to 10%
- > Lower operating costs by minimizing energy loss and consumption
- > Project a greener image by demonstrating a commitment to the environment

Reach new levels of technical, financial, and environmental performance