

InfraStruxure® Management Software

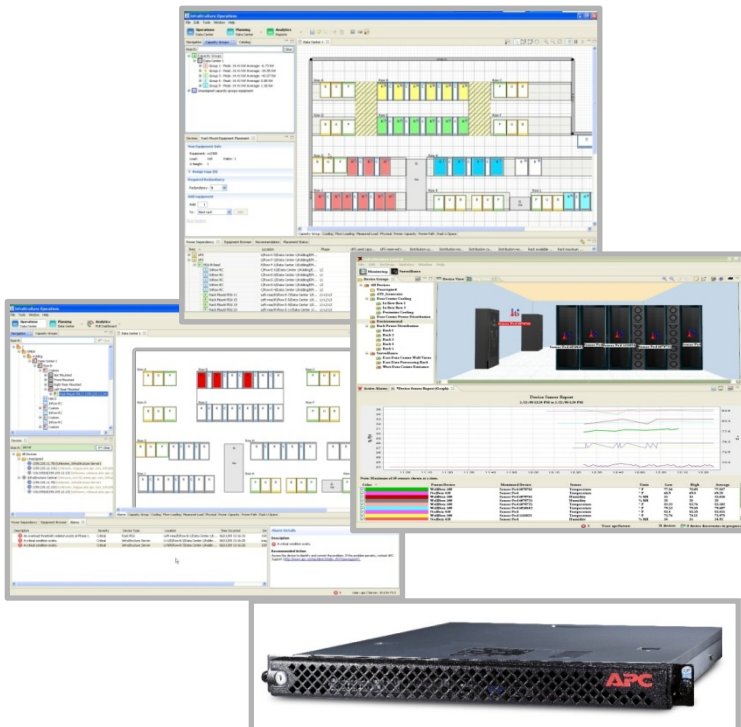
End to end data center infrastructure management software for monitoring and control of power, cooling, security and energy usage from the building through IT systems

InfraStruxure Central
InfraStruxure Operations
InfraStruxure Capacity
InfraStruxure Change
InfraStruxure Energy Efficiency
InfraStruxure Mobile
InfraStruxure Energy Cost



**A new level of
business intelligence
for your data center
physical infrastructure
management**

An advanced, vendor-neutral software system that provides a unified view and analysis of complex IT physical infrastructure and communicates with building, enterprise and network management systems to ensure quality, gain energy and cost efficiencies and aid in short and long-term planning and provisioning of data center equipment and resources.



APC
by Schneider Electric

InfraStruXure® Central

Data center management from rack to row to room to building



Centralized, real-time monitoring of any multi-vendor physical infrastructure



Easy to use, multi-vendor, monitoring that collects, organizes, distributes and reports on equipment status and health, critical alerts, and key information, providing a unified view of complex physical infrastructure and its implications to the business.

InfraStruXure Central provides a user-friendly environment for organizations to monitor their company-wide multi-vendor physical infrastructure: power, cooling, physical threat, power, and building control.

Real-time monitoring, user-defined reports and graphs, and instant fault notification and escalation enable quick assessment and resolution of critical infrastructure events that can adversely affect IT system availability.

The centralized repository of critical information can be accessed by multiple users from anywhere on the network, creating a consolidated view of the physical infrastructure.

InfraStruXure Central's open and flexible architecture expands with changing business needs through additional device licenses, add-on surveillance, capacity management and change management modules, and through integration with enterprise and building management systems.

A full software developer kit (SDK) allows custom integration with other systems for maximum flexibility. Summary reports bring new insight into data center health, planning and budgeting. Suppressed notification and maintenance mode ensure fast and accurate notifications to the right people at the right time.

Integrated with Power Management and Building Control

Communicate to Building Management Systems and PowerLogic ION-Enterprise for a broad range of intelligence about the health of critical support systems in the electrical and mechanical rooms as well as power quality and electrical distribution.

Web Services API

Application Programming Interface enabling integration of InfraStruXure Central data and alerts with deployed management systems or dashboards



InfraStruXure® Operations

Integrated inventory management for full overview of data center operations



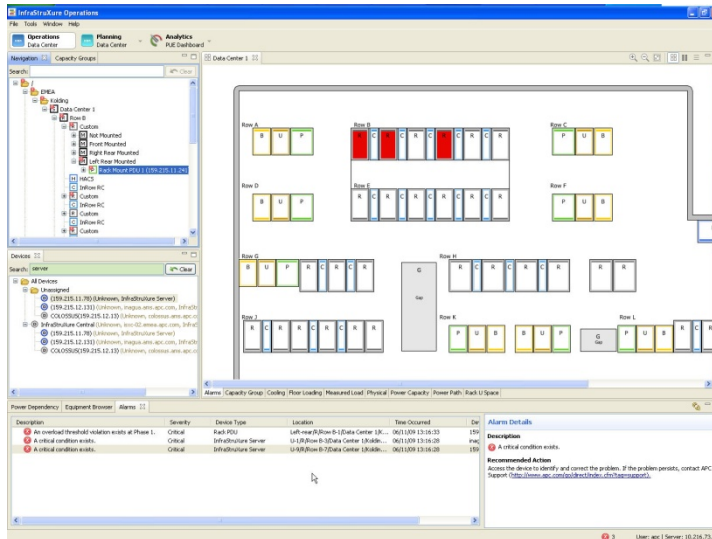
Data Center Management Application for InfraStruXure Central

InfraStruXure Operations enables vendor-agnostic inventory management with real-time device failures and data shown within your data center physical layout, as well as recommendations on how to resolve issues.

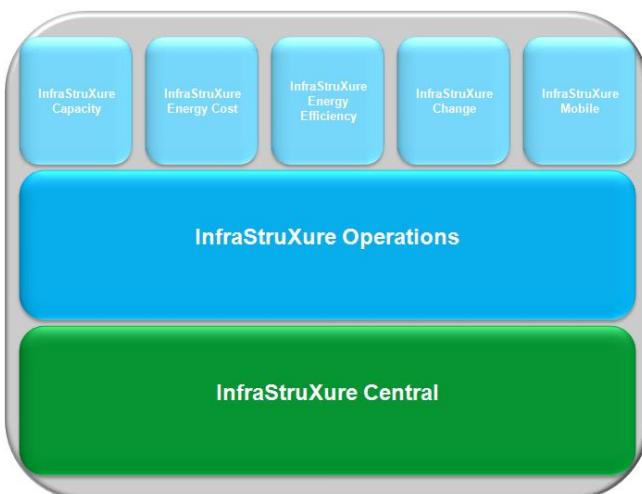
A location-based drill-down view provides a structured overview of data center locations, from a global to local view down to single assets.

The Power Usage Effectiveness (PUE) calculator supplies information on daily utilization of energy.

For instant updates on the go InfraStruXure Mobile provides access to InfraStruXure Operations information via handheld PDA.



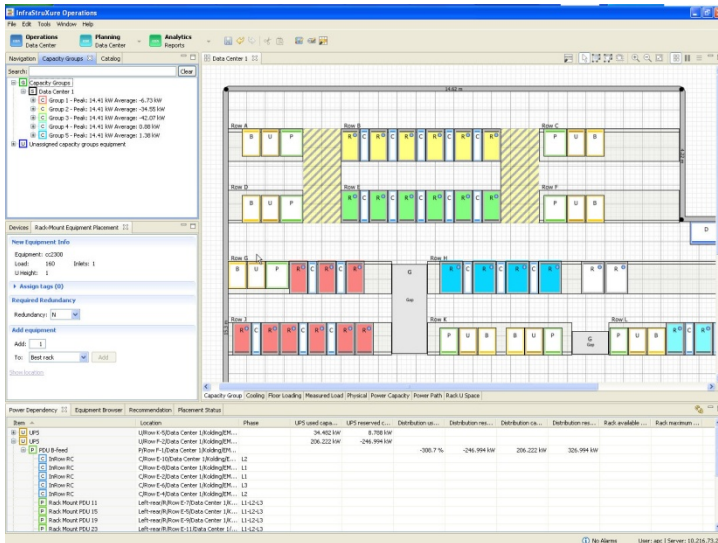
Instant overview of data center operations through inventory management, PUE calculator, real-time device alarms, and location-based drill-down



Application for InfraStruXure Central - complete multi-vendor management of the data center physical infrastructure

InfraStruXure® Capacity

Balance IT demand with physical infrastructure supply



Data Center Management Application for InfraStruXure Operations

InfraStruXure Capacity predicts the optimal location for physical infrastructure and rack-based IT equipment based on the availability and requirements of physical infrastructure capacity; and user defined requirements such as redundancy, network and business use grouping.

It reduces stranded capacity through optimized use of the physical infrastructure and avoids unplanned downtime.

With its sophisticated simulation based on live data, InfraStruXure Capacity proactively analyzes the impact of changes before they occur, enabling informed decision making and planning, ensuring that your physical infrastructure provides the required capacity for current and future needs.

Planning and optimizing utilization of actual physical infrastructure capacities via shared data center model, enabling efficient equipment provisioning and right-sizing of your data center.



Application for InfraStruXure Operations - complete multi-vendor management of the data center physical infrastructure

InfraStruXure® Change

Fully integrated workflow management for your IT physical infrastructure



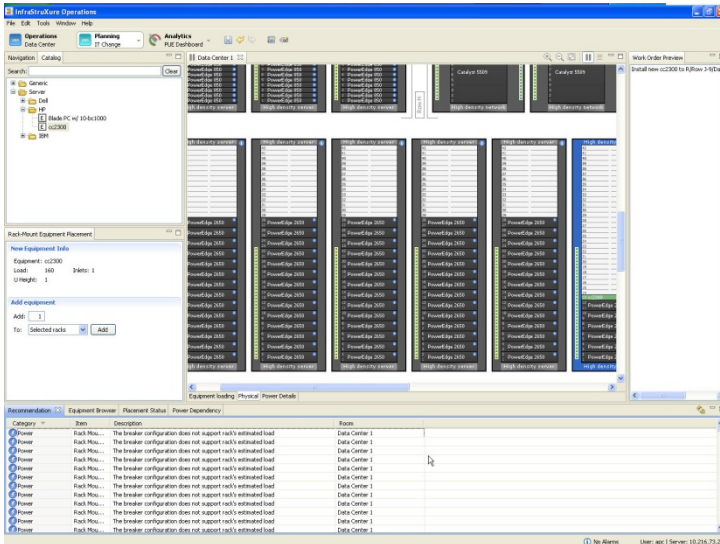
Data Center Management Application for InfraStruXure Operations

InfraStruXure Change enables operators to gain control over the data center environment by implementing organized moves, adds, and change work processes, significantly reducing the risk for inadvertent downtime.

With its automated workflow system, operators can assign work orders, reserve space, track status, and extract an audit trail for complete visibility and history into the change lifecycle.

The optional InfraStruXure Mobile provides you with your operational changes while on the data center floor, enables barcode scanning and ensures data integrity, as well as improved operational efficiency

Workflow management allows for easily tracking and executing moves, adds and changes of equipment in the datacenter



Application for InfraStruXure Operations - complete multi-vendor management of the data center physical infrastructure

InfraStruXure[®] Energy Efficiency

Intelligent PUE analytics at subsystem level



Full insight into current and historical energy efficiency for facilities, identifying efficiency losses and enabling improved PUE values at subsystem level.



Data Center Management Application for InfraStruXure Operations

InfraStruXure Energy Efficiency provides current and historical Power Usage Effectiveness (PUE) values, enabling a fact-based understanding of how much power is devoted to driving the installed IT-equipment compared with the total facility consumption.

It provides a detailed insight into how effectively energy is utilized down to subsystem level, as well as an understanding of how to improve energy efficiency. Subsystem data can either be measured or estimated, also allowing customers with few power meters to benefit from the application.

The web-based dashboard view includes efficiency data on current and historical PUE, as well as detailed subsystem cost analysis. InfraStruXure Energy Efficiency is available via InfraStruXure Operations, which enables integrations with InfraStruXure Central and 3rd party enterprise systems.

Application for InfraStruXure Operations - complete multi-vendor management of the data center physical infrastructure

InfraStruXure® Mobile

Wireless operation of your data center



Handheld, wireless bar-code scanner for viewing, creating & instantly synchronize changes on the go. Based on Motorola (Symbol) MC70 hardware.



Data Center Management Application for InfraStruXure Operations

InfraStruXure Mobile, based on Motorola (Symbol) MC70 hardware, provides you with your data center inventory while on the datacenter floor.

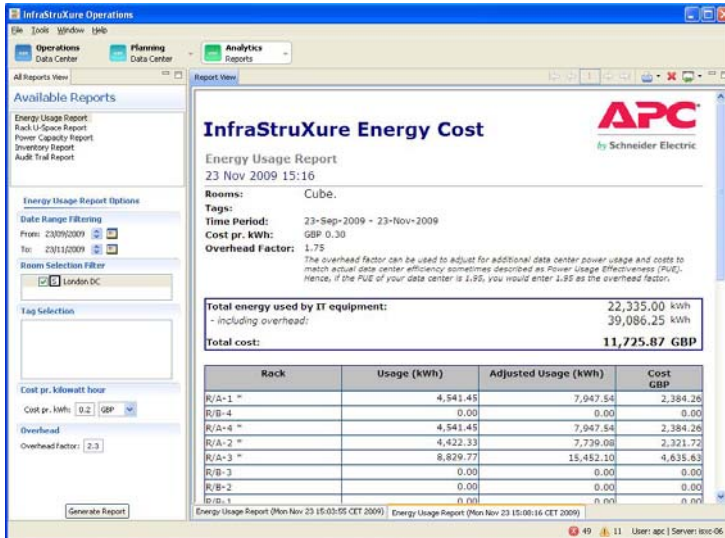
The integrated barcode scanner makes light work of implementing work orders and identifying equipment.

Using your wireless network, InfraStruXure Mobile automatically synchronizes server locations, ensuring data integrity, removing human error and improving operational efficiency.

Application for InfraStruXure Operations - complete multi-vendor management of the data center physical infrastructure

InfraStruXure® Energy Cost

Instant overview of rack energy usage



Cost analysis of energy use on a kW/h basis, detailed to the rack level, for calculating cost of energy consumption for specified equipment and aid in charge back and efficient budgeting



Data Center Management Application for InfraStruXure Operations

The InfraStruXure Energy Cost module provides an Energy Usage Report, which shows energy consumed within the data center by the kWh and cost per kWh, detailed to the rack level.

The energy usage is based on metered data, gathered over a specified period of time. If no metered data is available, estimated power draw will be calculated based on the power draw of the individual IT assets or nameplate values.

The Energy Usage Report provides the option of including an overhead factor accounting for energy losses through Power Usage Effectiveness (PUE). The report can be customized based on optional groupings by use of tags, such as department, tenant, purpose, density etc.

Application for InfraStruXure Operations - complete multi-vendor management of the data center physical infrastructure