

# How to restore HID UPS device driver to Windows 7 and Vista

If device manager shows APC UPS device or APC Battery BackUP and in Power Options you cannot configure the system to shutdown when the UPS is on battery (Figures A - C) you have 2 options. 1 is to roll the driver back to HID UPS (Figures D, E and K) or 2 is to update the driver to HID UPS (Figures F - K)

As you see when APC UPS (figure A) or APC Battery BackUP (Figure B) are the loaded driver under Power Options (Figure C) there is no availability to configure shutdown while on battery.

Figure A

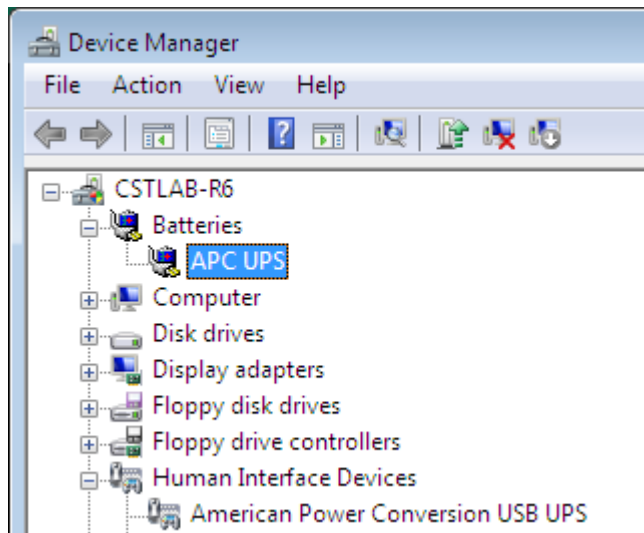


Figure B

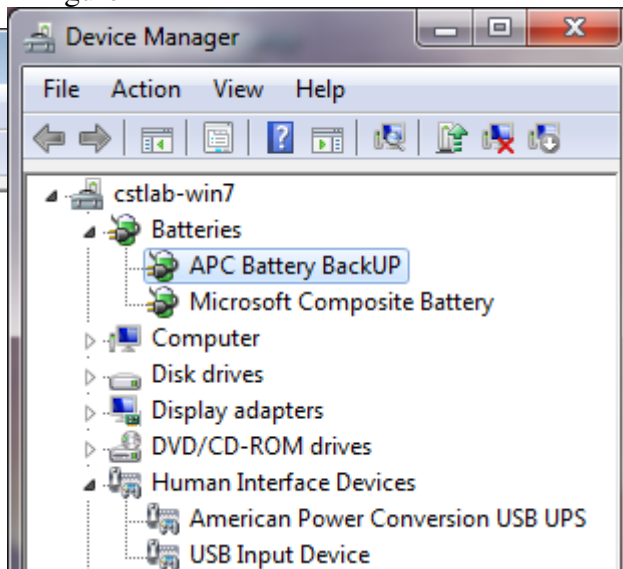
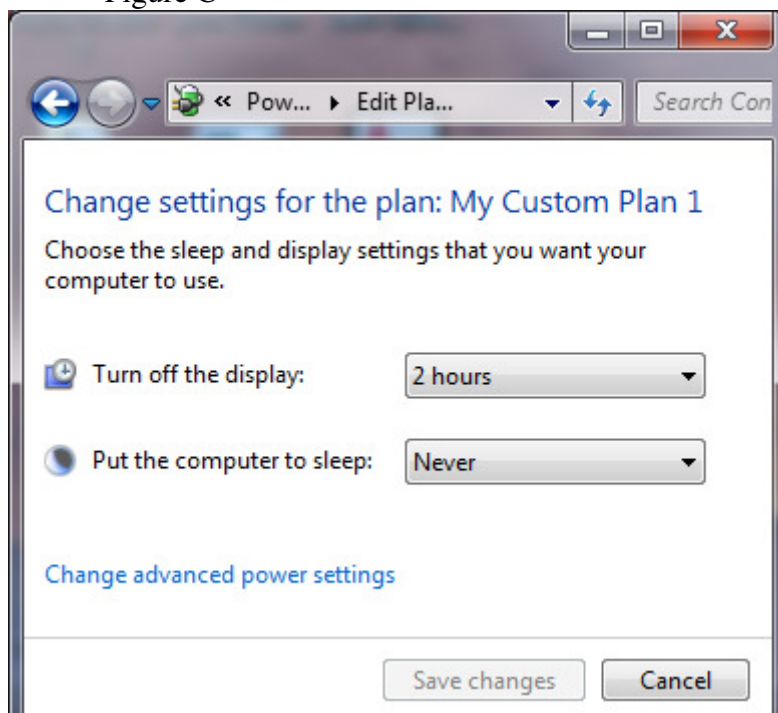


Figure C



Option 1 - To roll the driver back: Go to Control Panel – Device Manager – Batteries – Select the APC UPS or APC Battery BackUP– Select Driver tab – select Roll Back Driver. The Driver will revert to HID UPS (Figures D & E)

Figures D

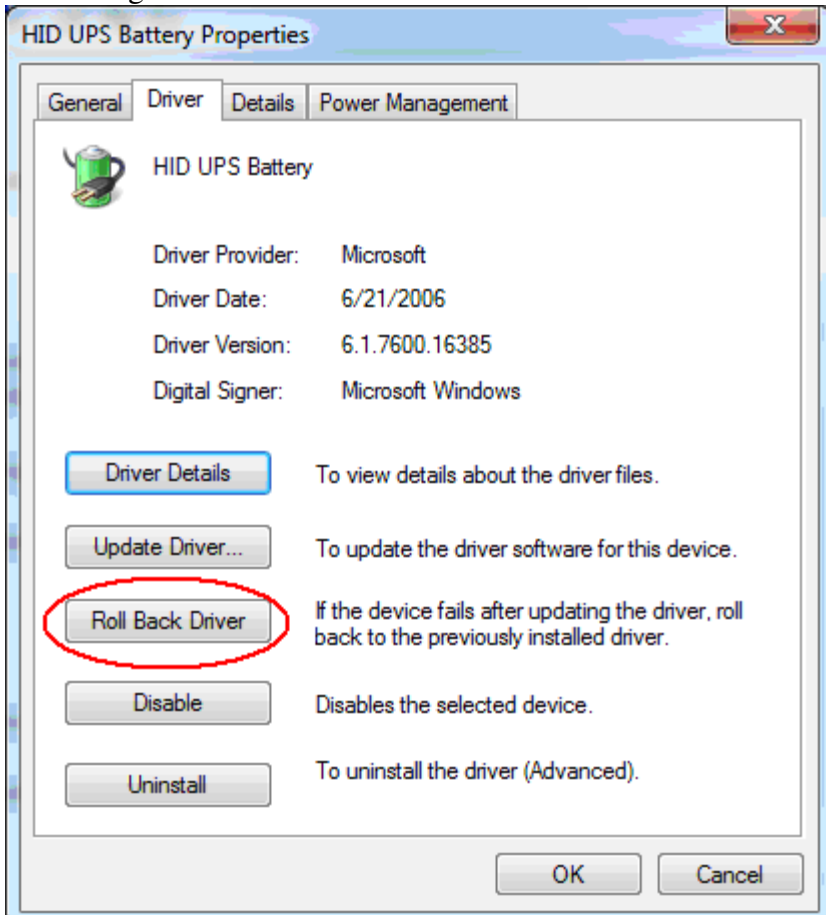
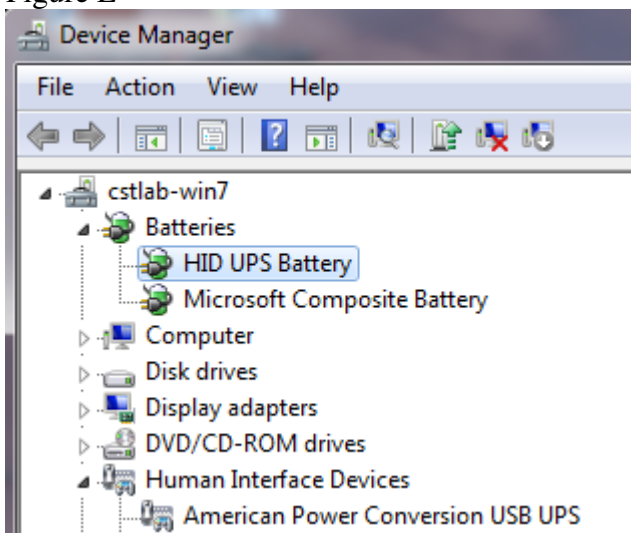


Figure E



Option 2 – If you cannot roll the driver back (roll back is grayed out) select Update Driver (Figure F) – Browse my Computer for Driver Software (Figure G) – Select Let me Pick from List of Device Driver on my Computer (Figure H) select HID UPS from list (Figure I)

Figure F

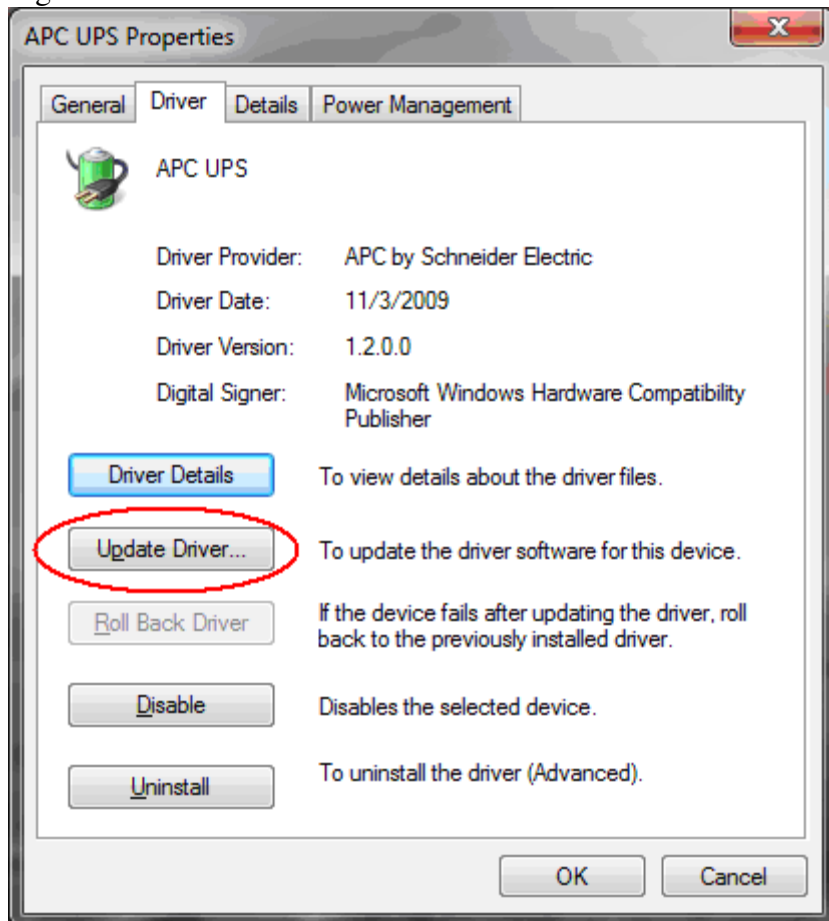


Figure G

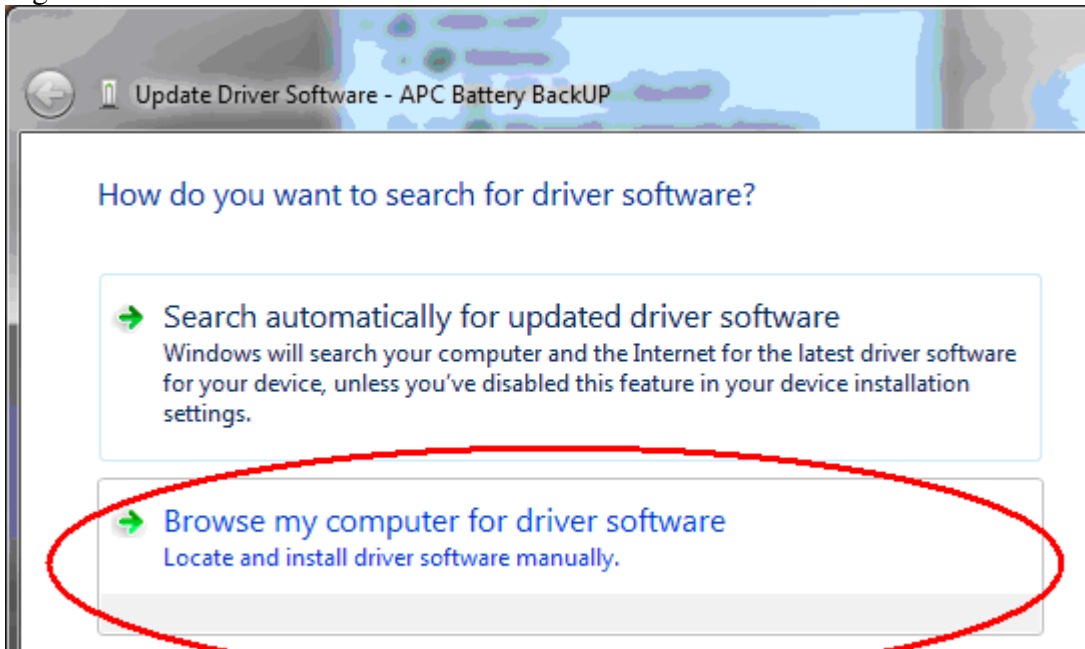


Figure H

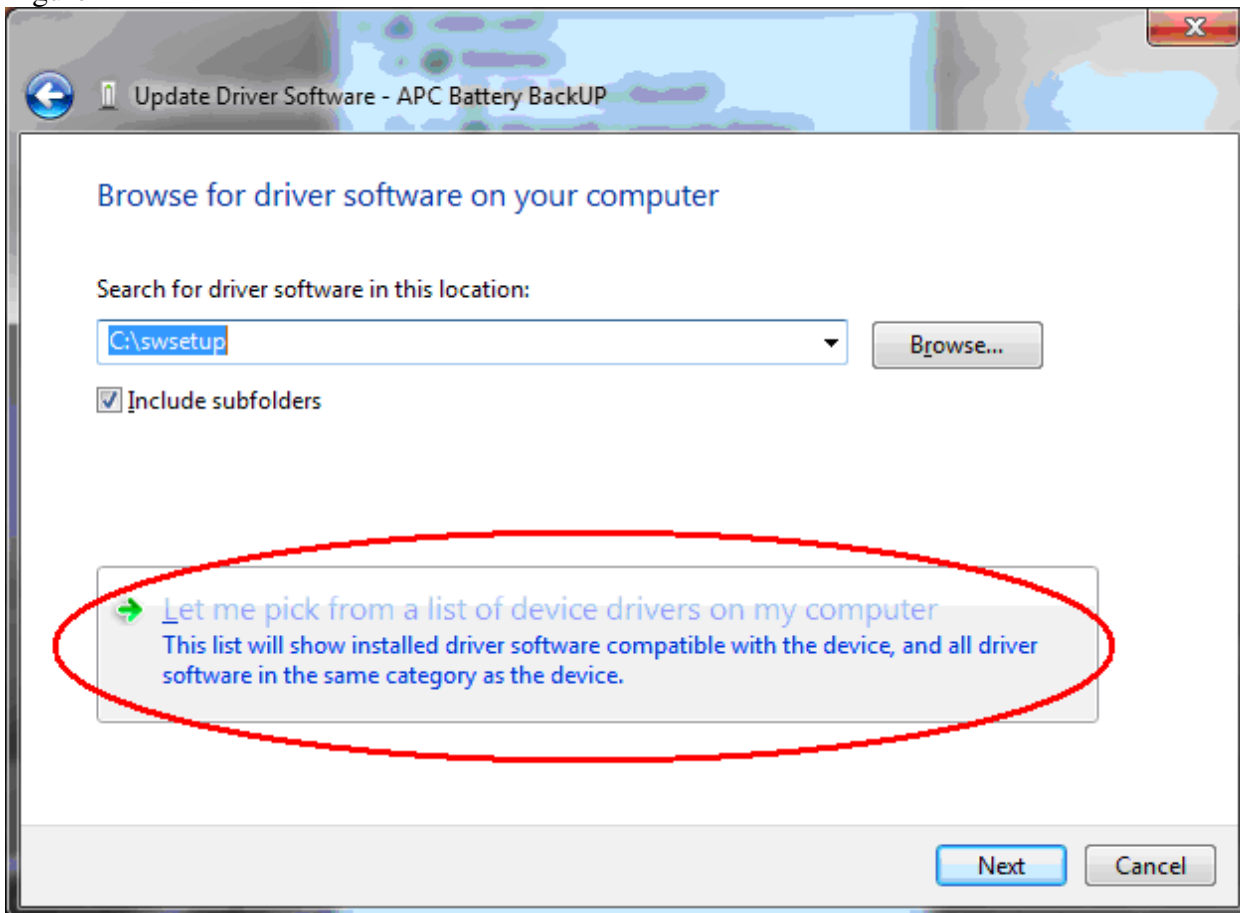


Figure 1

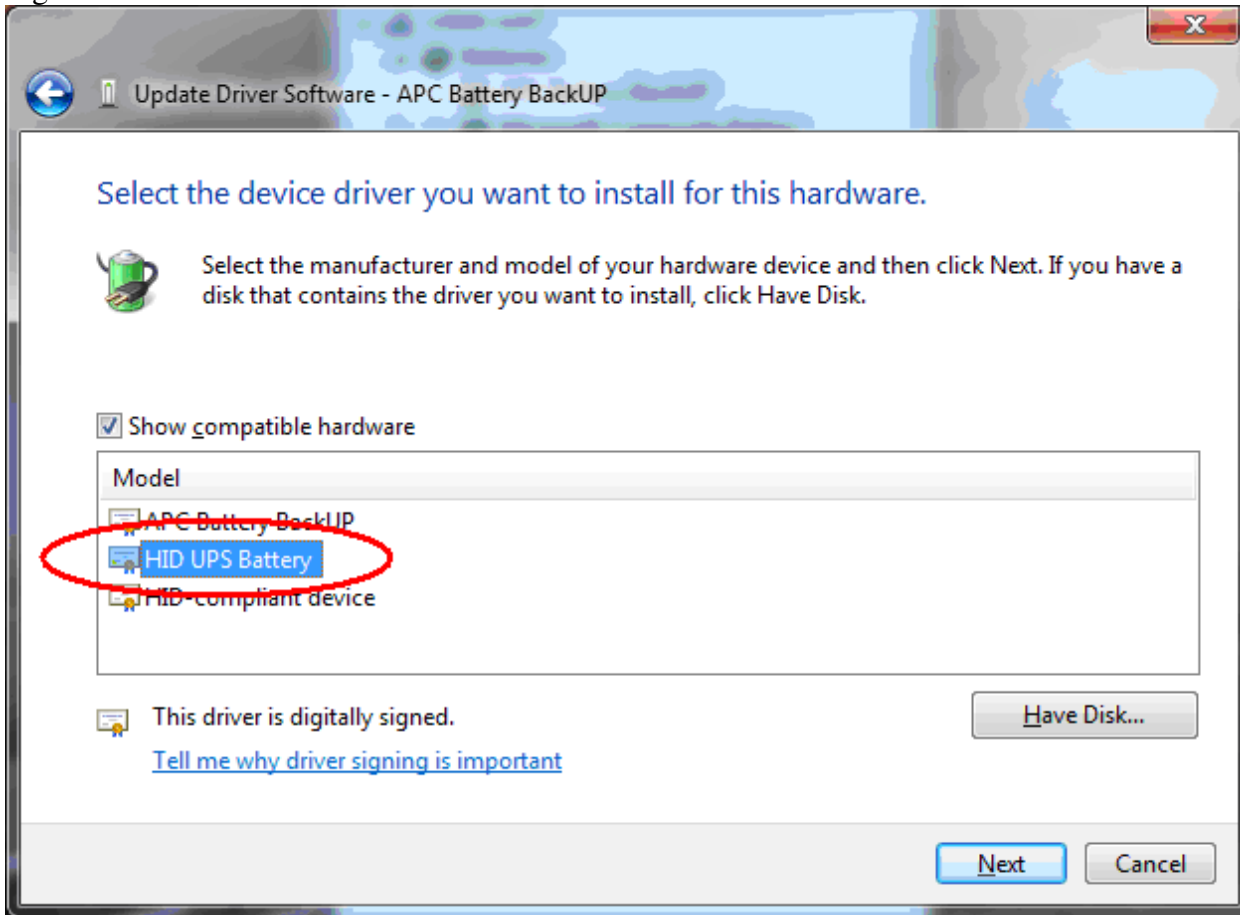
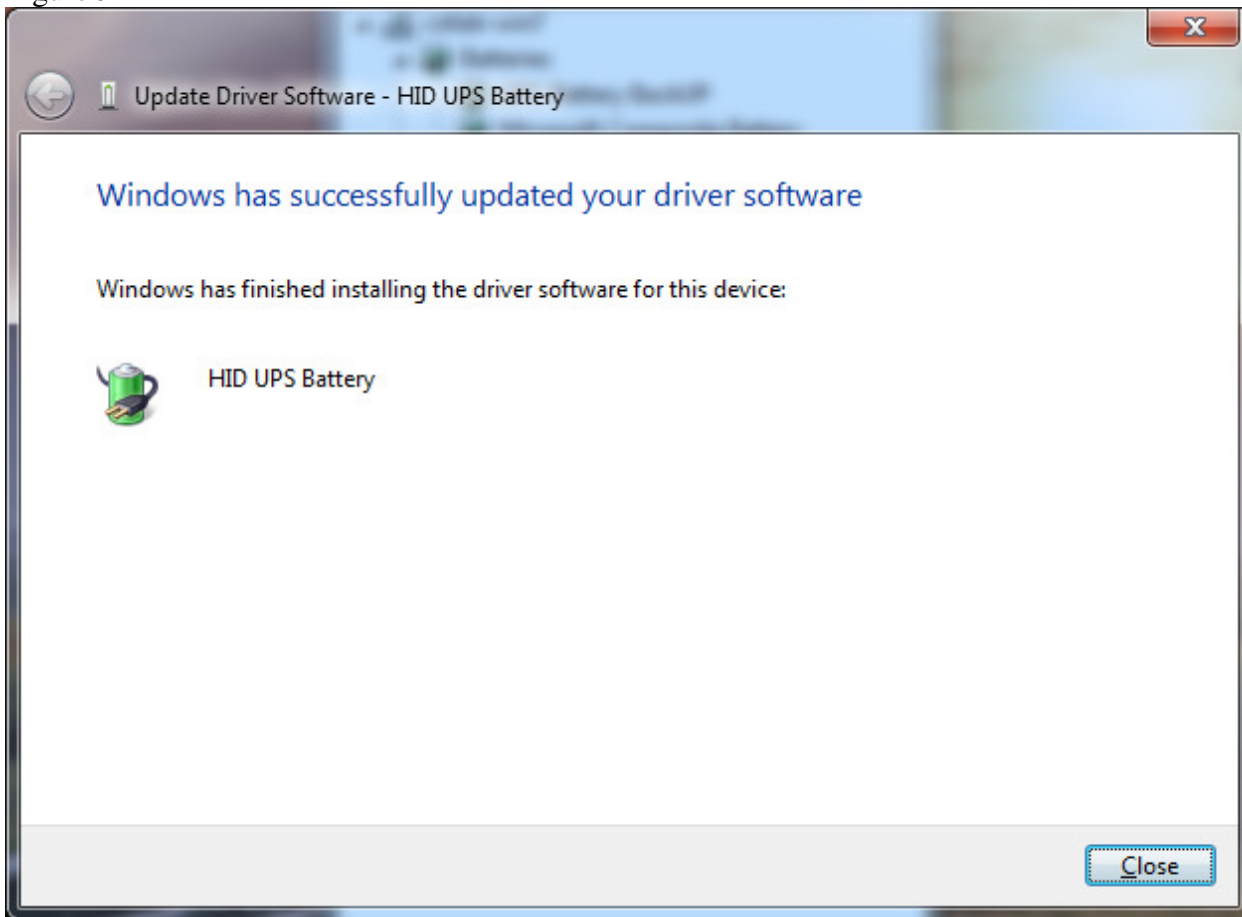


Figure J



You can now configure Power Options to shutdown when UPS is on Battery.

Figure K

### Change settings for the plan: My Custom Plan 1

Choose the sleep and display settings that you want your computer to use.



On battery



Plugged in



Turn off the display:

5 minutes

2 hours



Put the computer to sleep:

15 minutes

Never

[Change advanced power settings](#)

Save changes

Cancel