

After

**FIELD INSTALLED DAMPER CONTROL
CIRCUIT FOR AIR HANDLER DUCTS**

NOTE: Refer to Figure 32 on page 89 for complete diagram.

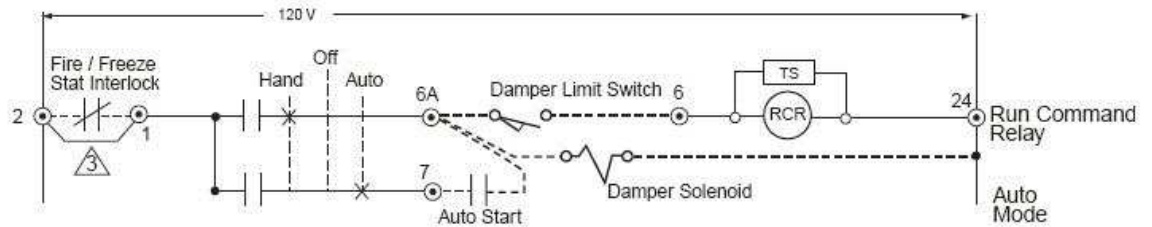
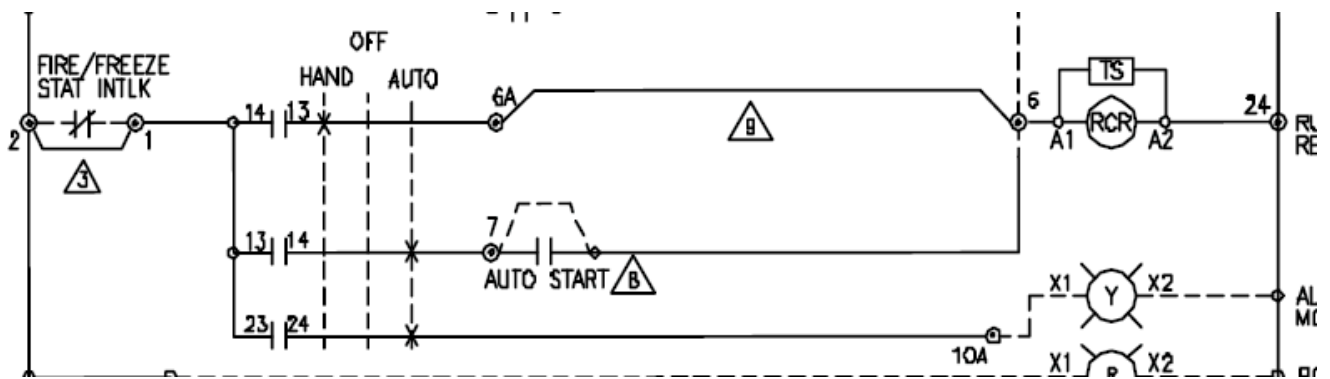


Figure 34: Identification of User Locations to Field Installed Damper Control Circuit

A damper control circuit is used to coordinate the position of a damper to open before the motor is started either in AFC or Bypass. This type of coordination is not required in the majority of applications, therefore it is not a standard factory option. When damper control coordination is required, refer to these instructions to install in the field.

Before



2nd option for field install end of damper control for Eflex enclosed drive. See above for example of wiring changes.

A: Remove jumper between 6 and 6A add damper limit switch dry contact.

B: Move auto start wire from terminal 6 and connect to terminal 6A

C: Add damper Solenoid coil between 6A and 24