

MODICON M258 S4001 vC: Documents required for M258 analysis

Objective:

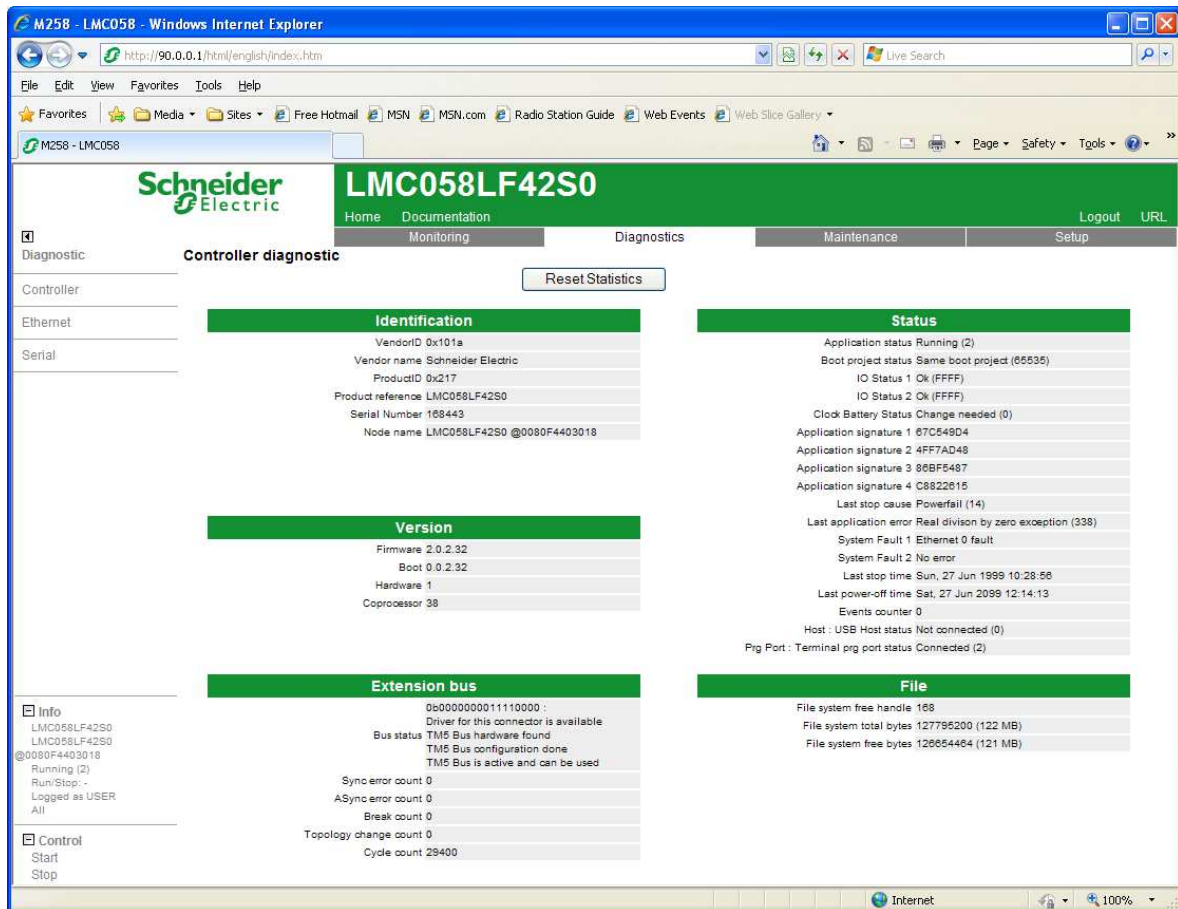
Some system information about M258 are available and can be used by L3 technical support in order to diagnostic some problems.

Part 1: How to get the Controller diagnostic under Webserver

- 1- Connect to the M258 plc by using the USB or Ethernet cable.
- 2- Start Internet Explorer or Mozilla Firefox
- 3- Enter the address 90.0.0.1

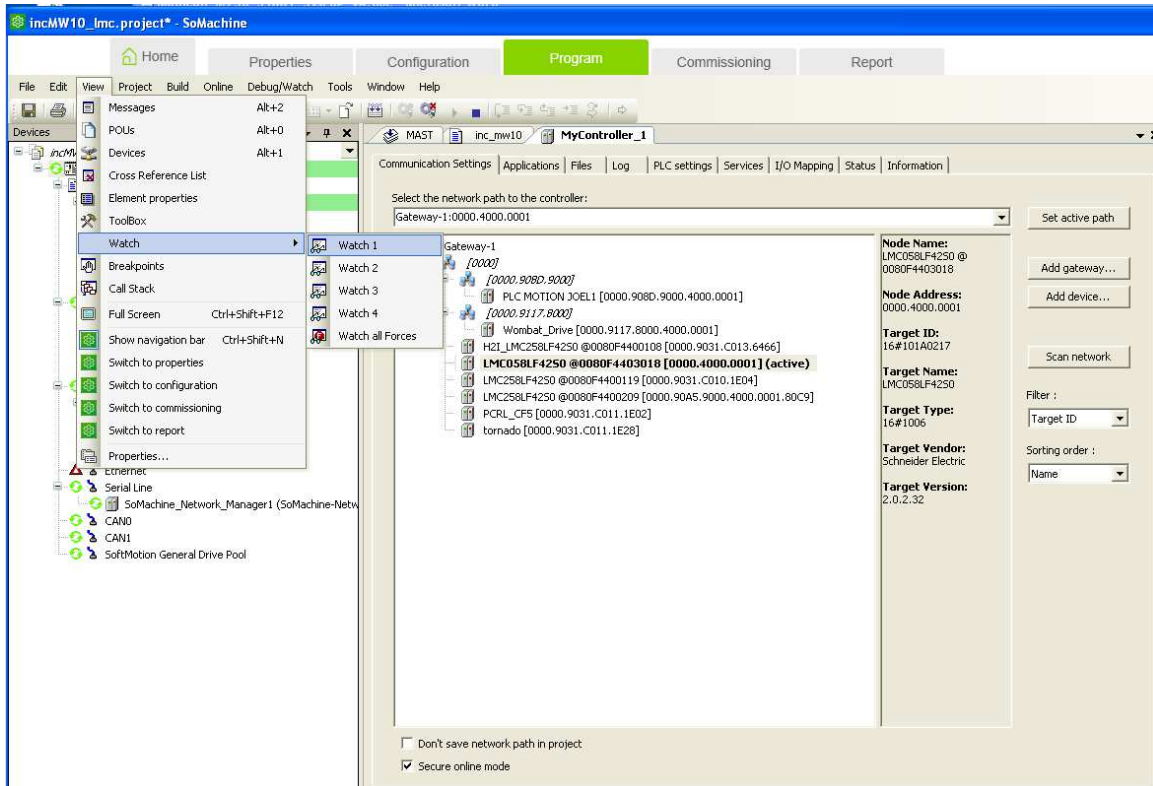


- 4- Enter the Password (default is USER)
- 5- Click on diagnostics then click on Controller
- 6- Send the print screen as below:

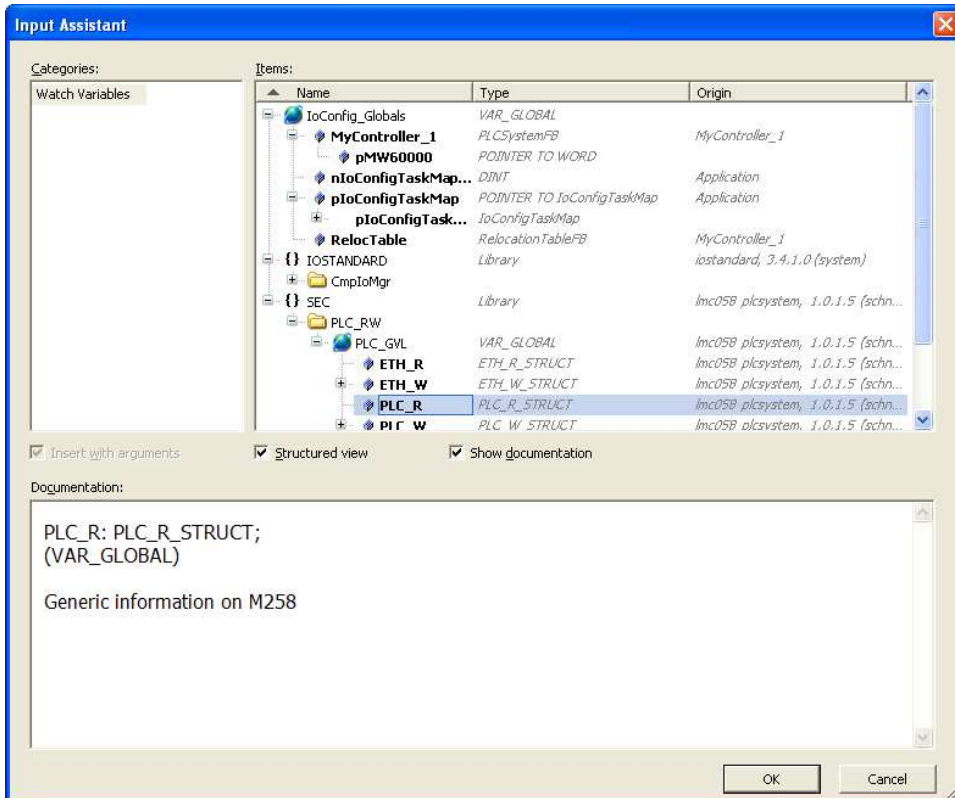


Part 2: How to get the PLC_R structure

- 1- Connect to the M258 plc with SoMachine.
- 2- Add the Watch view as below

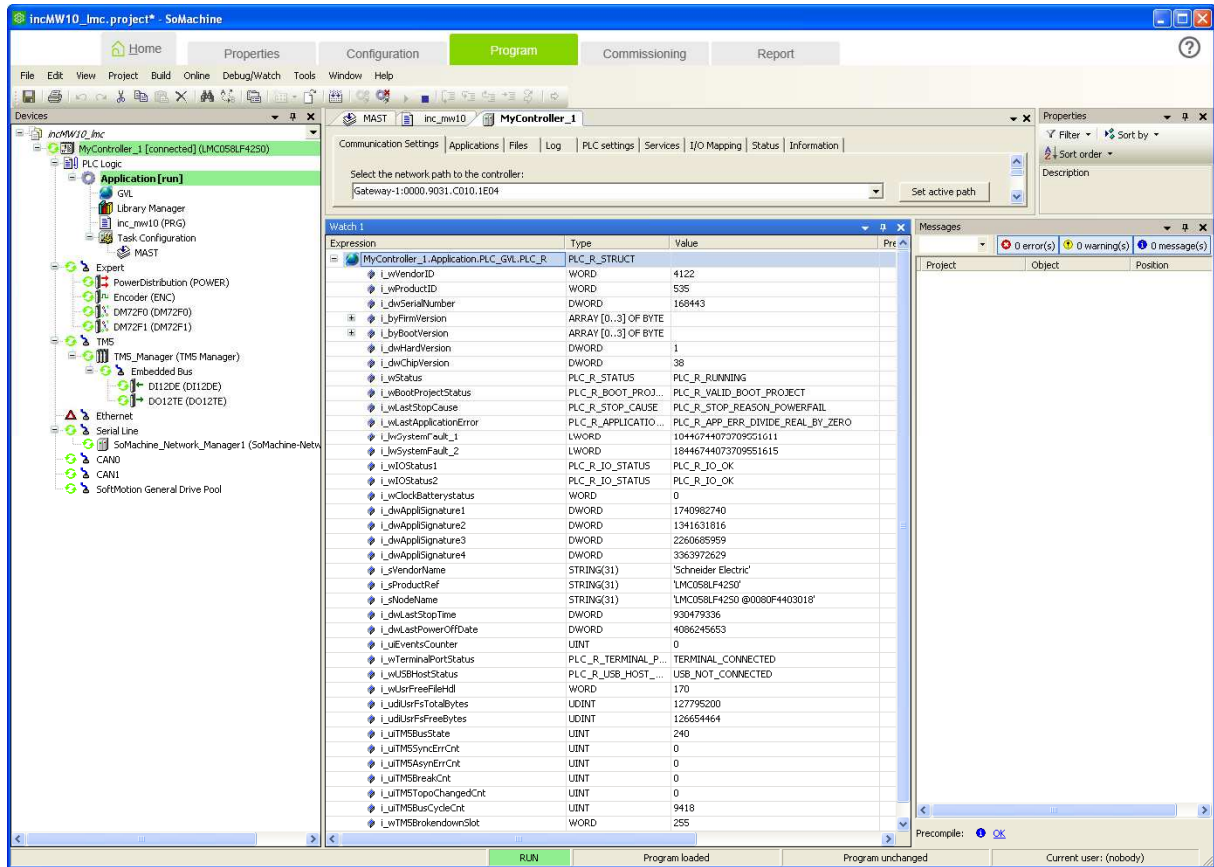


- 3- Select the PLC_R structure.



MODICON M258 Resolution S4001 – Documents required for M258 analysis

4- Open the PLC_R structure and send to us the print screen as below:

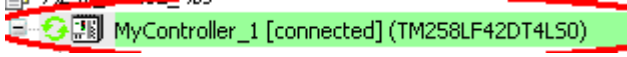


Part 3: How to retrieve SysLog files from M258

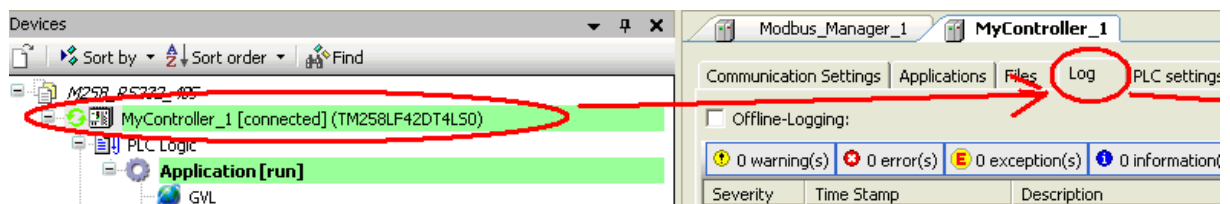
Some system information about M258 is saved in the “SysLog” directory. This information can be retrieved using SoMachine or an FTP client.


1: Retrieving SysLog files with SoMachine software

- Start SoMachine
- Connect to your PLC with SoMachine (By USB , Ethernet or SERIAL LINE)

- Double Click on “MyController”  to open Window of MyController

- Click on the “Log” tab :



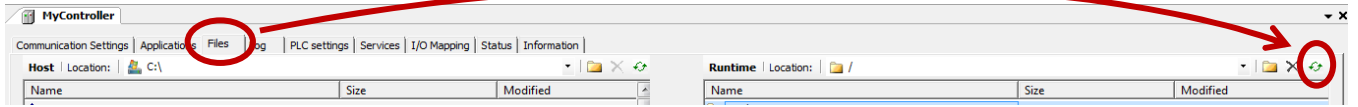
- Click Refresh  : SoMachine loads a file containing logged events :


Severity	Time Stamp	Description	Component
Information	02/01/1970 19:10:38:0	<root>Serial link <2>.Manager configuration OK. </root>	CmpSerial
Information	02/01/1970 19:10:38:0	<root>Serial link <2>.Start configuration Modbus manager.Transmission mode RTU, Address 0,Time between frame <10>.</root>	CmpSerial
Information	02/01/1970 19:10:38:0	<root>Serial link <2>.UART configuration OK. </root>	CmpSerial
Information	02/01/1970 19:10:38:0	<root>Serial link <2>.Start configuration UART.Slot:PCI 1 ,RS 485,pol No,baud 19200,data format 8,parity Even,stop bit 1. </root>	CmpSerial
Information	02/01/1970 19:10:38:0	<root>Serial link <2>. Reset. </root>	CmpSerial
Information	02/01/1970 18:47:32:0	<root>Serial link <2>.Manager configuration OK. </root>	CmpSerial
Information	02/01/1970 18:47:32:0	<root>Serial link <2>.Start configuration Modbus manager.Transmission mode RTU, Address 0,Time between frame <10>.</root>	CmpSerial
Information	02/01/1970 18:47:32:0	<root>Serial link <2>. UART configuration OK. </root>	CmpSerial

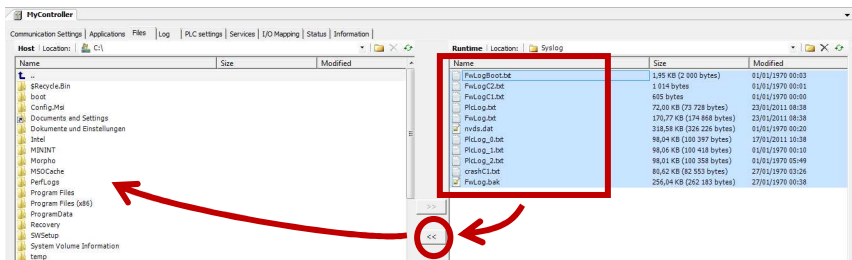
- Click on Export  : an .xml file is created.

MODICON M258 Resolution S4001 – Documents required for M258 analysis

- Now click on the “Files” tab :



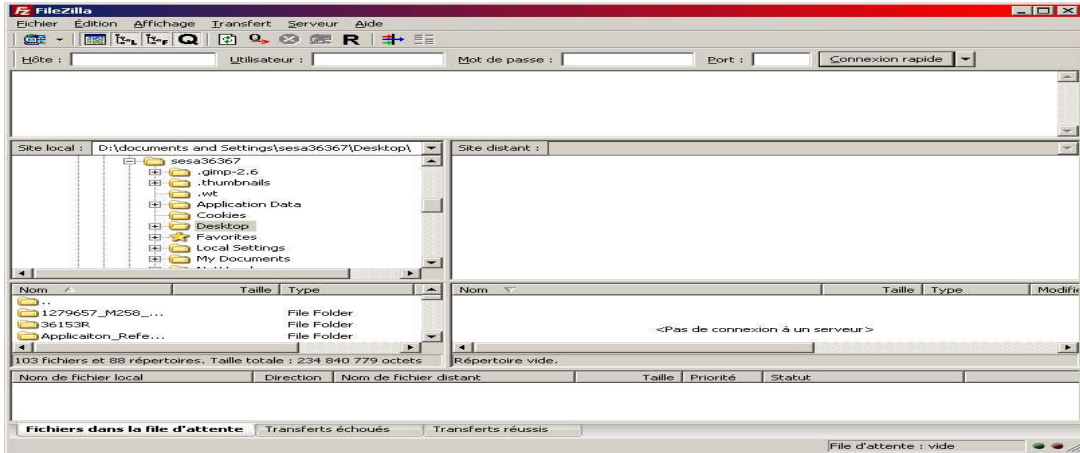
- Click Refresh  : SoMachine loads the PLC file system in the right hand window
- Navigate to “SysLog” directory
- Select all the files available in the SysLog directory :



- Copy them in the desired directory in the left hand window using the “<<” button

2: Get SysLog files with FTP client

- Start FileZilla software

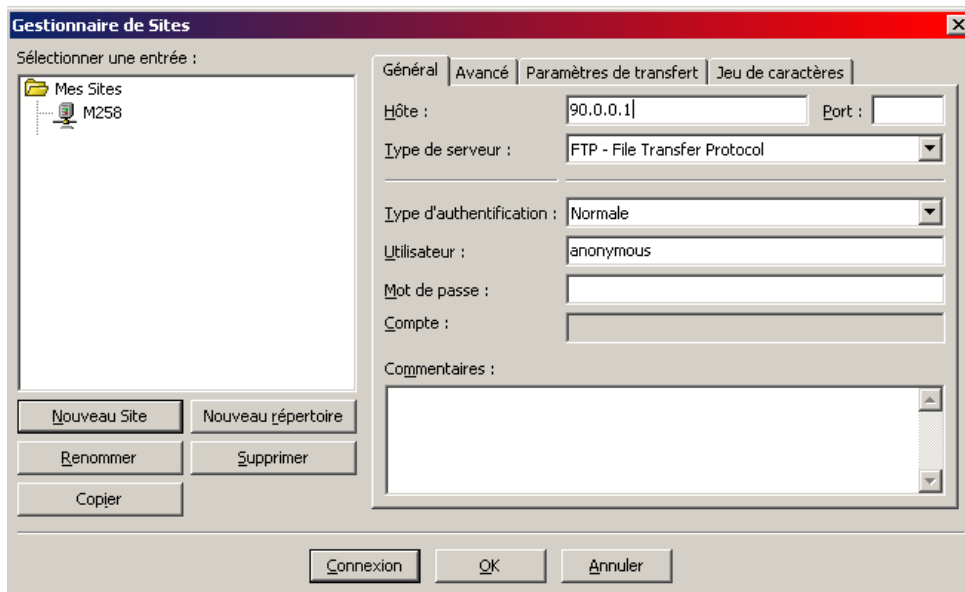


- Create a new connection with the parameters as described below :

Adress : 90.0.0.1

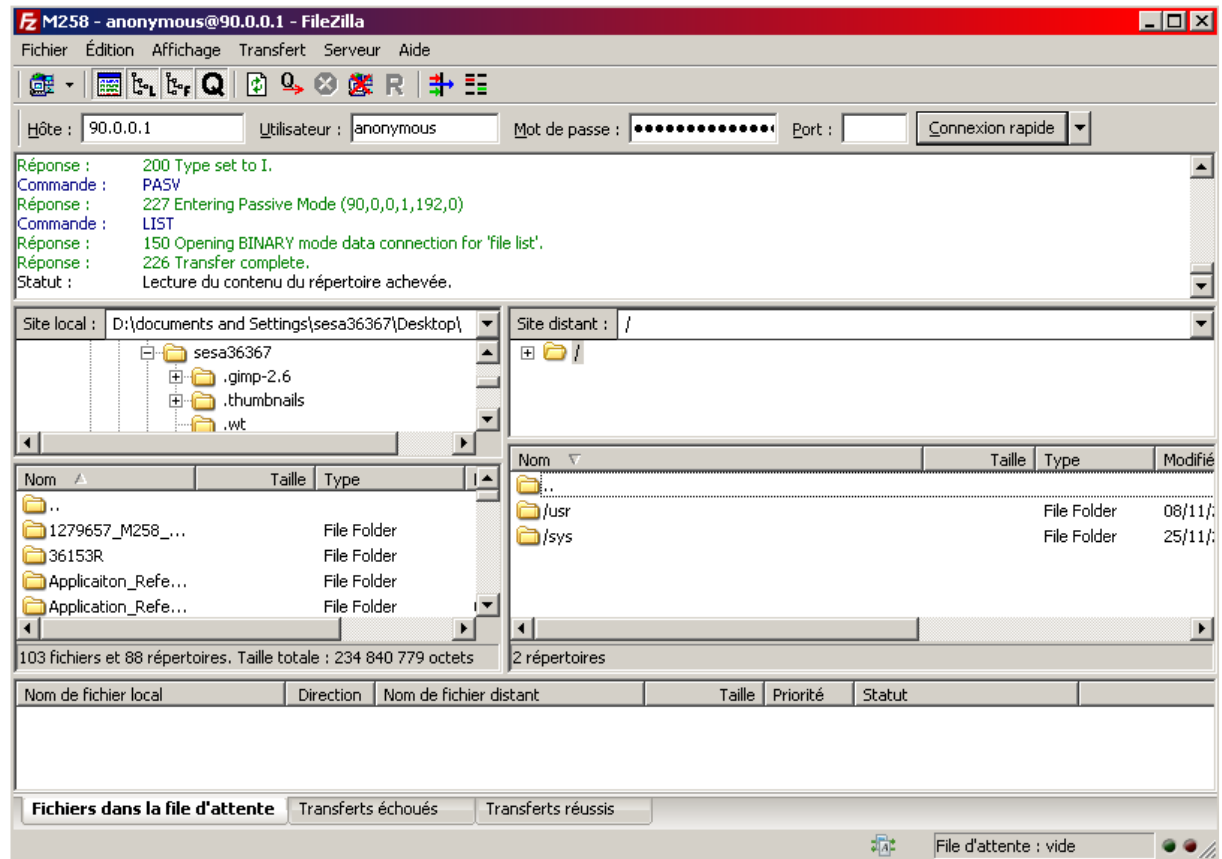
Login : anonymous

Password : (no password)

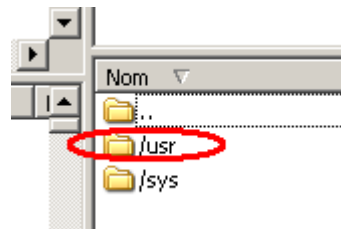


MODICON M258 Resolution S4001 – Documents required for M258 analysis

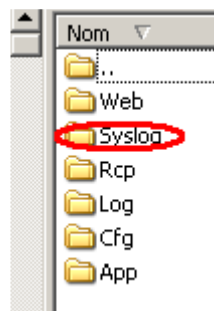
- Click on « connection » button



- Go to the directory "usr"



- Go to the directory "SysLog"



- Save all the files from the SysLog directory