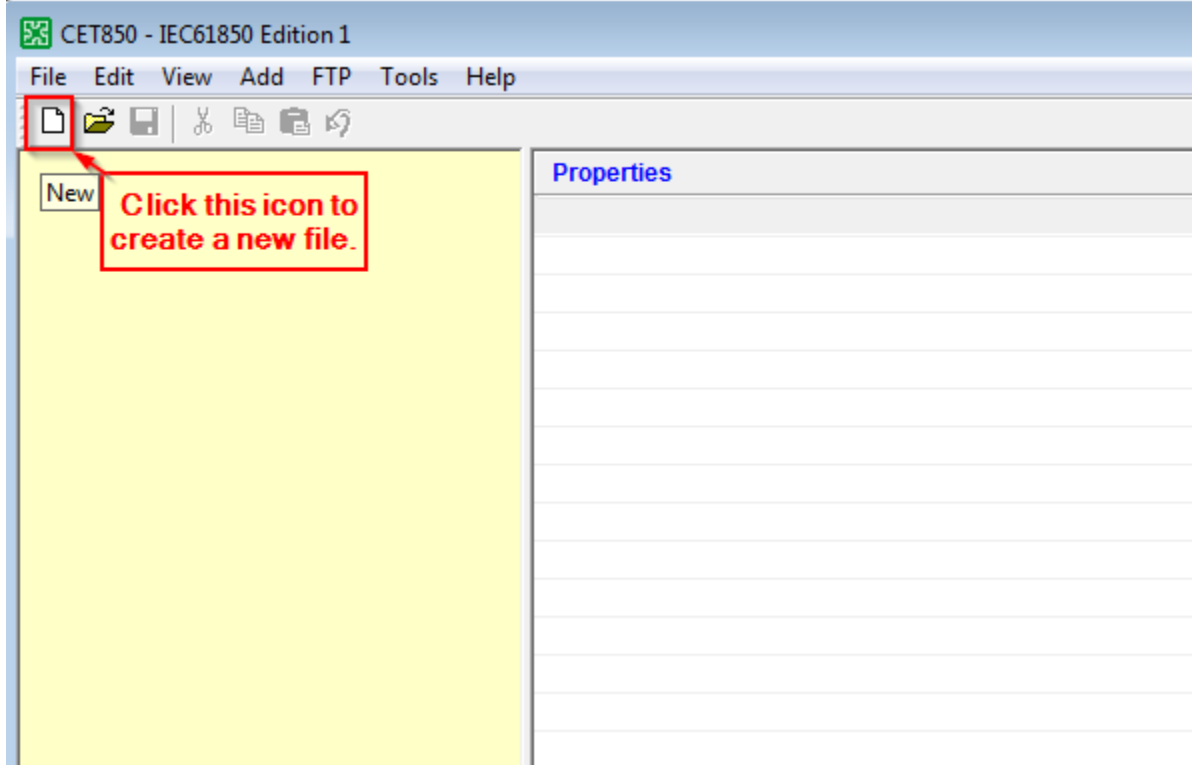
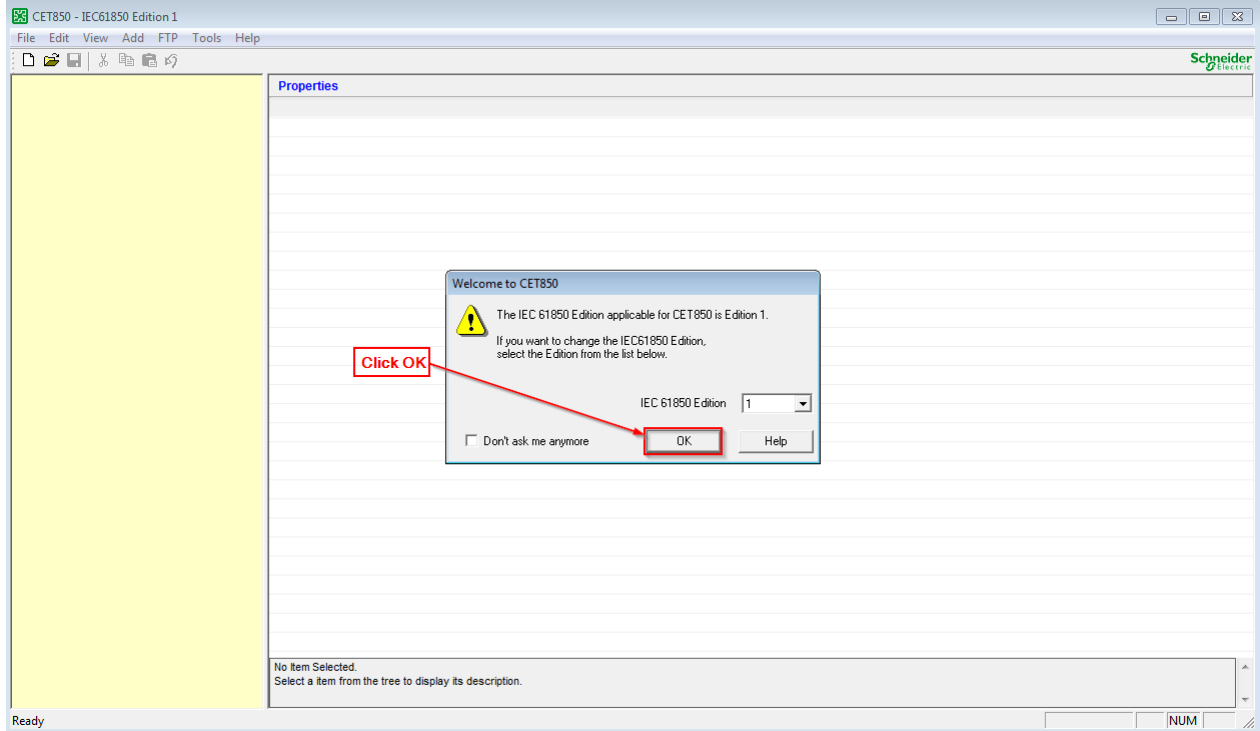
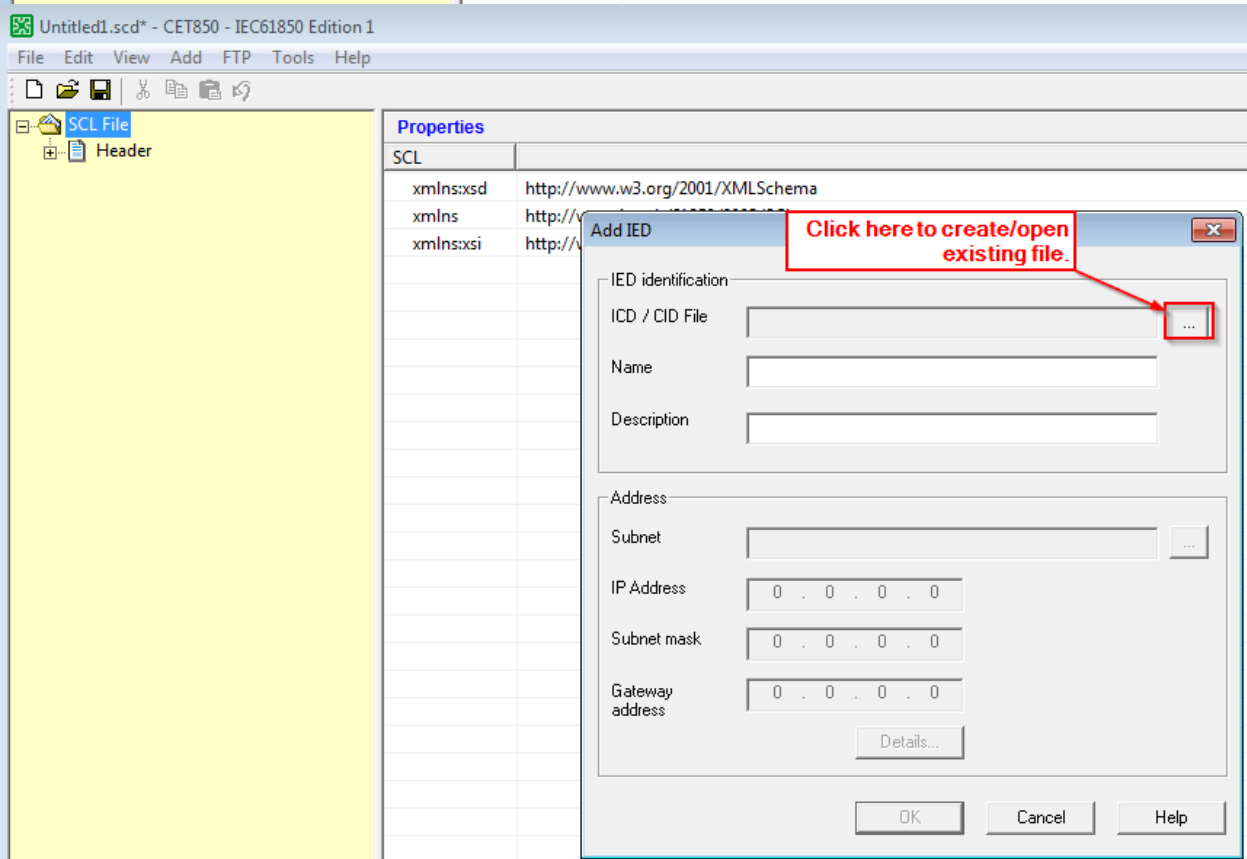
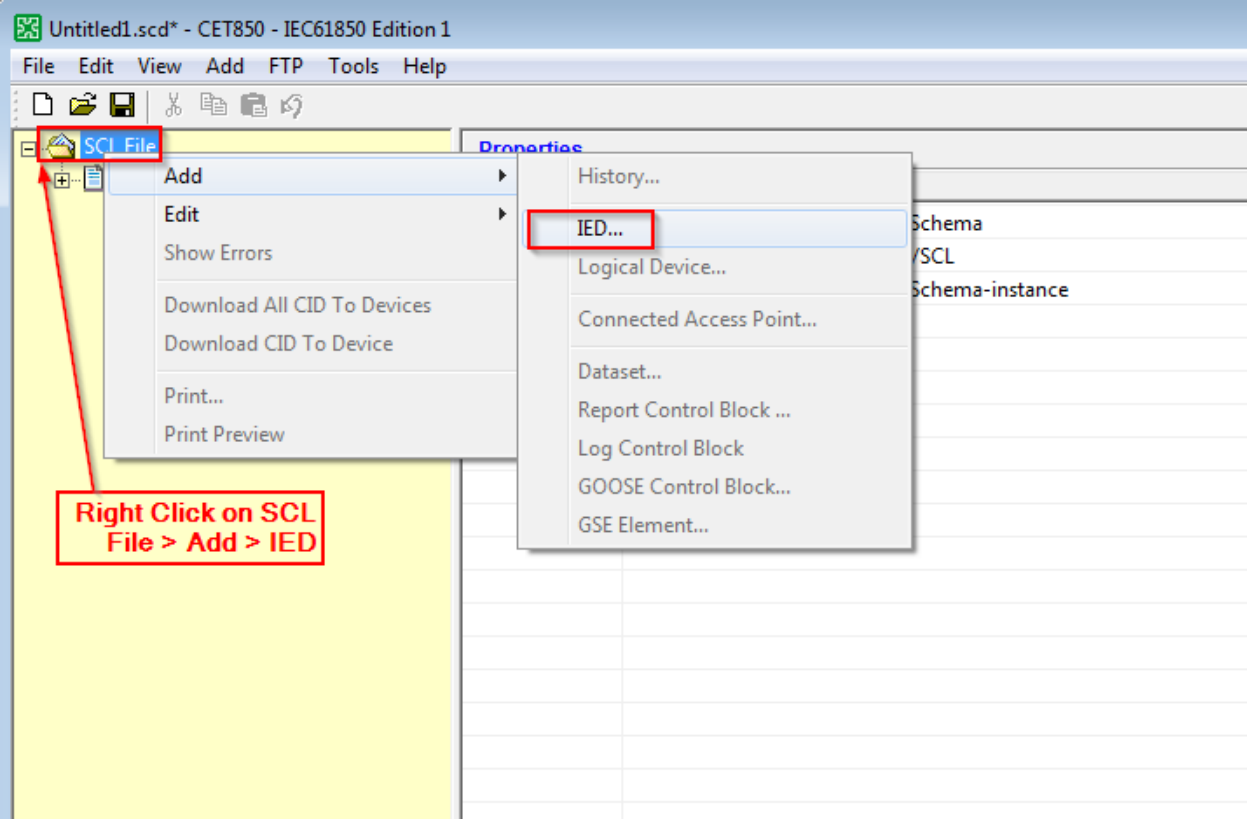
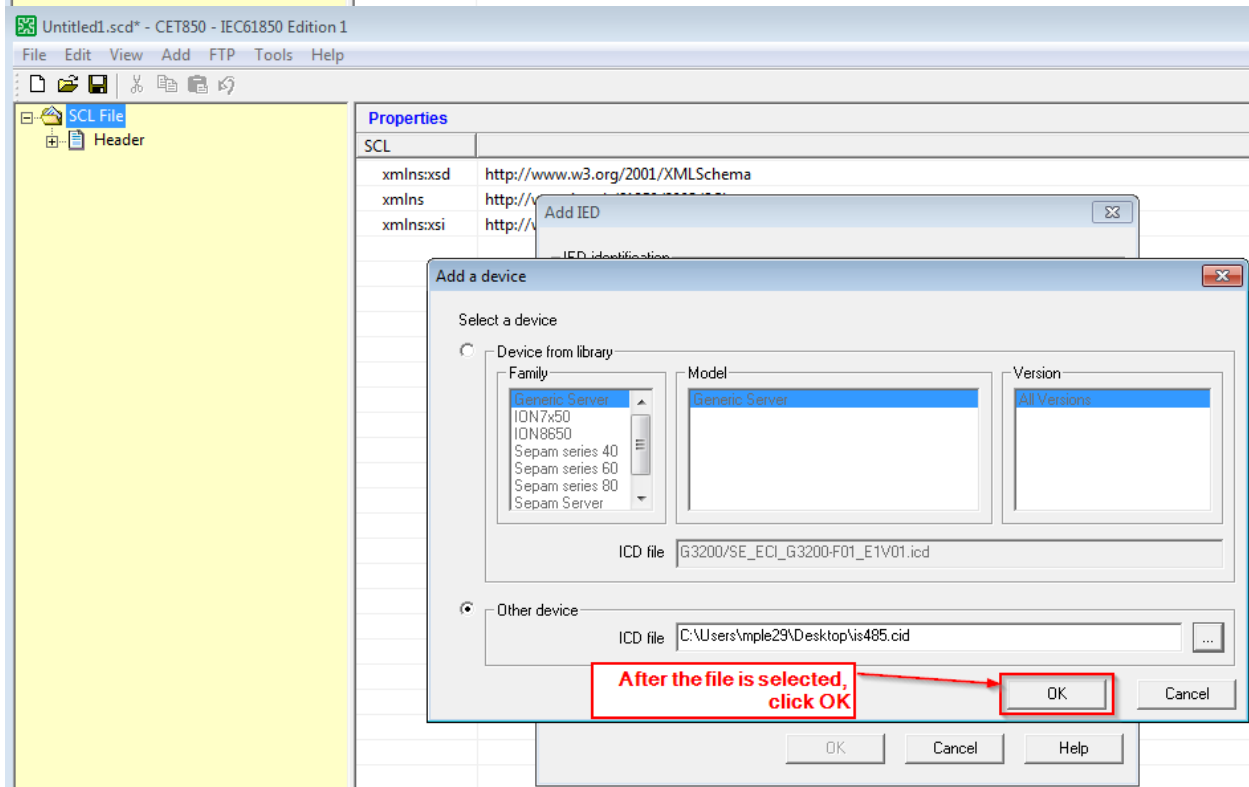
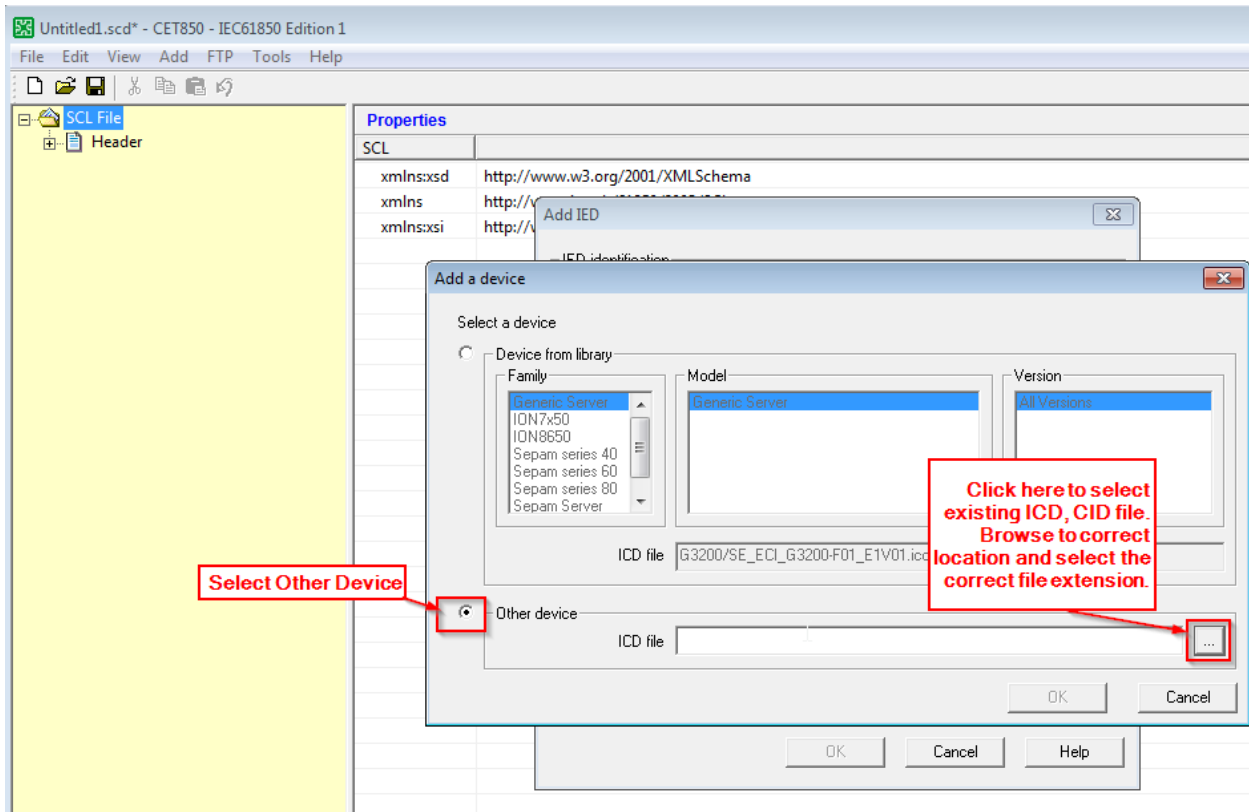


This document is to assist with opening a CID, ICD, or SCD files using Schneider Electric's CET850 Software. Open the software and follow the document below.







Untitled1.scd\* - CET850 - IEC61850 Edition 1

File Edit View Add FTP Tools Help

SCL File

- Header

Properties

xmlns:xsd	http://www.w3.org/2001/XMLSchema
xmlns	http://www.iec61850.org/2005/09/scl
xmlns:xsi	http://www.w3.org/2001/XMLSchema-instance

**Add IED**

IED identification

ICD / CID File: C:\Users\mple29\Desktop\is485.cid

Name: test

Description:

Address

Subnet: Communication test

IP Address: 169 . 254 . 0 . 10

Subnet mask: 255 . 255 . 0 . 0

Gateway address: 0 . 0 . 0 . 0

Details...

OK Cancel Help

**Provide a descriptive name**

**Provide description as needed**

**Define the subnet for communications as required**

**Provide an IP, Subnet and Gateway for the device**

**Click OK after the above has been populated as necessary**

Untitled1.scd\* - CET850 - IEC61850 Edition 1

File Edit View Add FTP Tools Help

SCL File

- Header
- Communication
  - test
  - LD LDevice1
    - LN LLN0
    - LN LPHD1
    - LN TTMP1
    - LN TTMP2
    - LN TTMP3
    - LN TTMP4
    - LN TTMP5
    - LN TTMP6
    - LN TTMP7
    - LN TTMP8
    - LN TTMP9
    - LN TTMP10
    - LN TTMP11
    - LN TTMP12
    - LN TTMP13
    - LN TTMP14
    - LN TTMP15

Properties

IED

desc	
type	RTUType
name	test
manufacturer	SystemCORP Pty Ltd
configVersion	1.0
Services	

**Expand the device and LD as needed to configure the device**