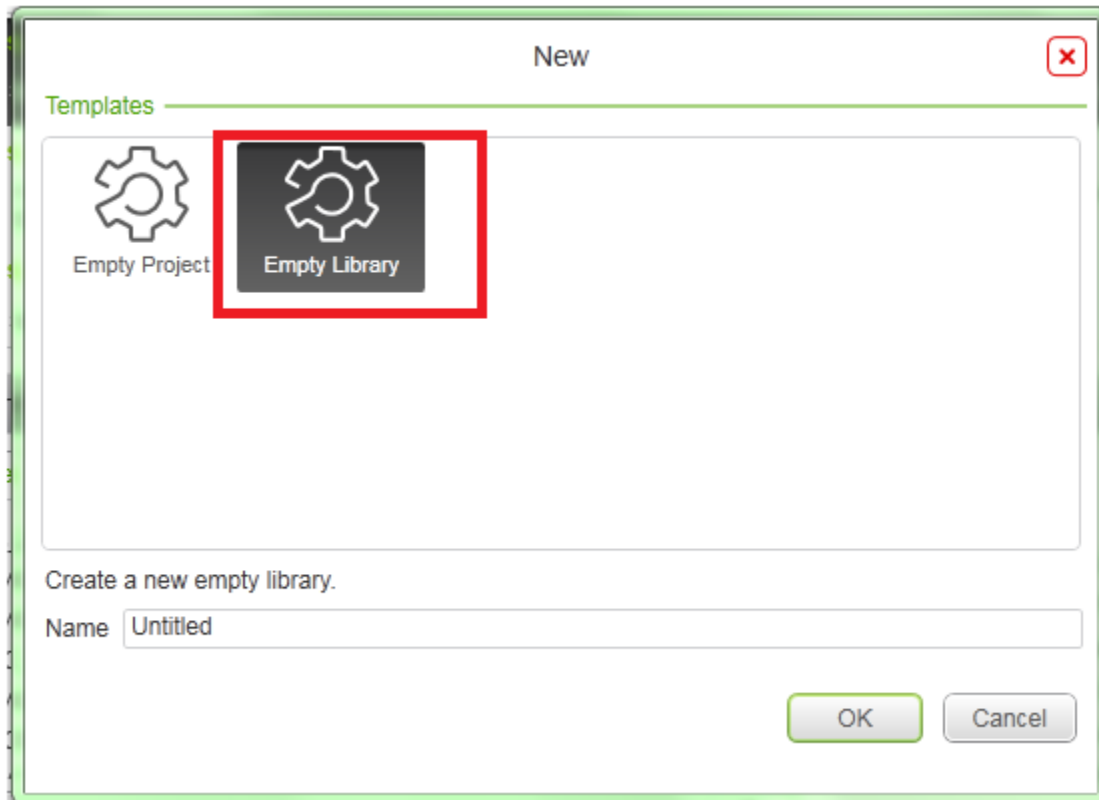


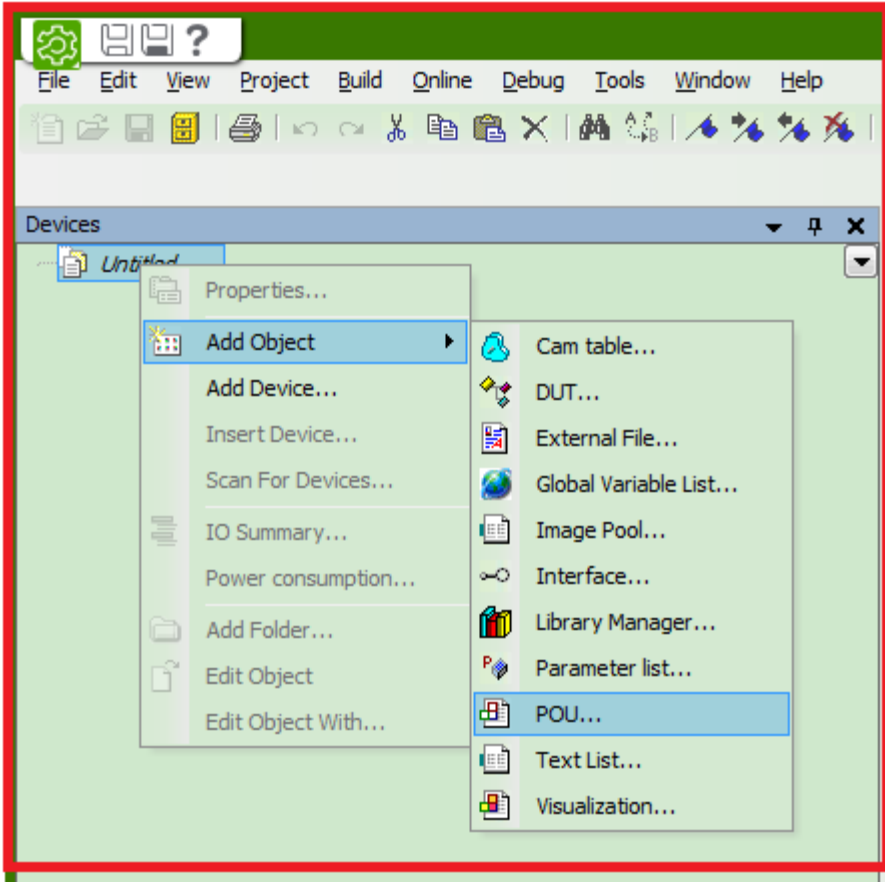
How to create the compiled library in SoMachine

If the user want to create self-library , how to do?

When you create new project, you can select empty library.



Right-click the mouse on project name, select the POU.



In POU window, select Function block.

Add POU

Create a new POU (Program Organization Unit)

Name:
POU

Type:

- Program
- Function Block**
 - Extends: ...
 - Implements: ...
- Function
 - Return type: ...

Access specifier:

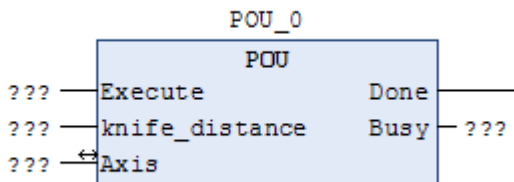
Method implementation language:
Continuous Function Chart (CFC)

Implementation language:
Sequential Function Chart (SFC)

Add **Cancel**

You can define the var_in, var_out and var_in_out in your function block. You can see my example.

```
ITF POU x POU_1
1 FUNCTION_BLOCK POU
2 VAR_INPUT
3   Execute: BOOL;
4   knife_distance: INT;
5 END_VAR
6 VAR_OUTPUT
7   Done: BOOL;
8   Busy: BOOL;
9 END_VAR
10 VAR
11 END_VAR
12
13 VAR_IN_OUT
14   Axis: Axis_REF;
15 END_VAR
```



You can save project as compiled project. Then you can add the library in your project.

